

## TCF-9 Polyclonal Antibody

### Description

<b>Product type</b>	Primary Antibody
<b>Code</b>	BT-AP08894
<b>Host</b>	Rabbit
<b>Isotype</b>	IgG
<b>Size</b>	20ul, 50ul, 100ul
<b>Immunogen</b>	The antiserum was produced against synthesized peptide derived from human GCF. AA range:141-190
<b>Mol wt</b>	89385
<b>Species reactivity</b>	Human
<b>Clonality</b>	Polyclonal
<b>Recommended application</b>	WB, ELISA
<b>Concentration</b>	1 mg/ml
<b>Full name</b>	TCF-9 Antibody
<b>Synonyms</b>	GCFC2; C2orf3; GCF; TCF9; GC-rich sequence DNA-binding factor 2; GC-rich sequence DNA-binding factor; Transcription factor 9; TCF-9

**This product is for research use only, not for use in human, therapeutic or diagnostic procedure.**

### Background

The first mRNA transcript isolated for GCFC2 (GC-rich sequence DNA-binding factor 2) was part of an artificial chimera derived from two distinct gene transcripts and a primer used in the cloning process (see Genbank accession M29204). A positively charged amino terminus present only in the chimera was determined to bind GC-rich DNA, thus mistakenly thought to identify a transcription factor gene.

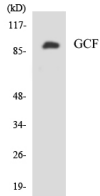
### Recommended Dilution

WB: 1: 500 - 1: 2000

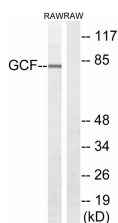
ELISA: 1: 20000

Not yet tested in other applications.

### Images



Western blot analysis of the lysates from HeLa cells using GCF antibody.



Western blot analysis of lysates from RAW264.7 cells, using GCF Antibody. The lane on the right is blocked with the synthesized peptide.

## Storage

-20°C for one year

501 Changsheng S Rd, Nanhu Dist, Jiaxing, Zhejiang, China

Tel: 86 21 31007137 | E-mail: [save@bt-laboratory.com](mailto:save@bt-laboratory.com) | [www.bt-laboratory.com](http://www.bt-laboratory.com)