

EphA4(Phospho Tyr596) Polyclonal Antibody

Description

| | |
|-------------------------|--|
| Product type | Primary Antibody |
| Code | BT-AP08897 |
| Host | Rabbit |
| Isotype | IgG |
| Size | 20ul, 50ul, 100ul |
| Immunogen | Synthesized phospho-peptide around the phosphorylation site of human EphA4 (phospho Tyr596) |
| Mol wt | 109860 |
| Species reactivity | Human, Mouse |
| Clonality | Polyclonal |
| Recommended application | WB, ELISA |
| Concentration | 1 mg/ml |
| Full name | Ephrin type-A receptor 4 |
| Synonyms | Ephrin type-A receptor 4; EPHA4; HEK8; SEK; TYRO1; Ephrin type-A receptor 4; EPH-like kinase 8; EK8; hEK8; Tyrosine-protein kinase TYRO1; Tyrosine-protein kinase receptor SEK |

This product is for research use only, not for use in human, therapeutic or diagnostic procedure.

Background

This gene belongs to the ephrin receptor subfamily of the protein-tyrosine kinase family. EPH and EPH-related receptors have been implicated in mediating developmental events, particularly in the nervous system. Receptors in the EPH subfamily typically have a single kinase domain and an extracellular region containing a Cys-rich domain and 2 fibronectin type III repeats. The ephrin receptors are divided into 2 groups based on the similarity of their extracellular domain sequences and their affinities for binding ephrin-A and ephrin-B ligands. Multiple transcript variants encoding different isoforms have been found for this gene.

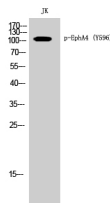
Recommended Dilution

WB: 1: 500 - 1: 2000

ELISA: 1: 10000

Not yet tested in other applications.

Images



Western Blot analysis of JK cells using Phospho-EphA4 (Y596) Polyclonal Antibody

Storage

-20°C for 1 year