

TCP-1 Theta Polyclonal Antibody

Description

Product type	Primary Antibody
Code	BT-AP08902
Host	Rabbit
Isotype	IgG
Size	20ul, 50ul, 100ul
Immunogen	The antiserum was produced against synthesized peptide derived from human CCT8. AA range:361-410
Mol wt	59621
Species reactivity	Human, Mouse
Clonality	Polyclonal
Recommended application	WB, ELISA
Concentration	1 mg/ml
Full name	TCP-1 theta Antibody
Synonyms	CCT8; C21orf112; CCTQ; KIAA0002; T-complex protein 1 subunit theta; TCP-1-theta; CCT-theta; Renal carcinoma antigen NY-REN-15

This product is for research use only, not for use in human, therapeutic or diagnostic procedure.

Background

CCT8 encodes the theta subunit of the CCT chaperonin, which is abundant in the eukaryotic cytosol and may be involved in the transport and assembly of newly synthesized proteins. Alternative splicing results in multiple transcript variants of this gene. A pseudogene related to this gene is located on chromosome 1.

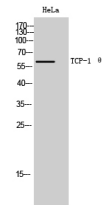
Recommended Dilution

WB: 1: 500 - 1: 2000

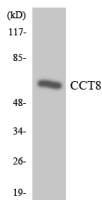
ELISA: 1: 5000

Not yet tested in other applications.

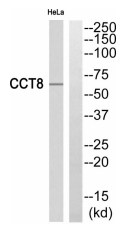
Images



Western Blot analysis of HeLa cells using TCP-1 theta Polyclonal Antibody



Western blot analysis of the lysates from HeLa cells using CCT8 antibody.



Western blot analysis of CCT8 Antibody. The lane on the right is blocked with the CCT8 peptide.

Storage

-20°C for one year

501 Changsheng S Rd, Nanhu Dist, Jiaxing, Zhejiang, China

Tel: 86 21 31007137 | E-mail: save@bt-laboratory.com | www.bt-laboratory.com