

## TCR Beta Polyclonal Antibody

### Description

<b>Product type</b>	Primary Antibody
<b>Code</b>	BT-AP08904
<b>Host</b>	Rabbit
<b>Isotype</b>	IgG
<b>Size</b>	20ul, 50ul, 100ul
<b>Immunogen</b>	The antiserum was produced against synthesized peptide derived from human TCR beta. AA range:66-115
<b>Mol wt</b>	19885
<b>Species reactivity</b>	Human
<b>Clonality</b>	Polyclonal
<b>Recommended application</b>	WB, ELISA
<b>Concentration</b>	1 mg/ml
<b>Full name</b>	TCR beta Antibody
<b>Synonyms</b>	TRBC1; T-cell receptor beta-1 chain C region

This product is for research use only, not for use in human, therapeutic or diagnostic procedure.

### Background

TRBC1 (T Cell Receptor Beta Constant 1) is a Protein Coding gene. Among its related pathways are Immune System and CD28 co-stimulation. An important paralog of this gene is TRBC2.

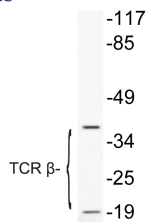
### Recommended Dilution

WB: 1: 500 - 1: 2000

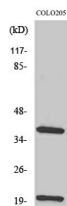
ELISA: 1: 10000

Not yet tested in other applications.

### Images



Western blot analysis of lysate from COLO205 cells treated with Forskolin, using TCR  $\beta$  antibody.



Western Blot analysis of various cells using TCR  $\beta$  Polyclonal Antibody

### Storage

-20°C for one year