

Tctex5 Polyclonal Antibody

Description

Product type	Primary Antibody
Code	BT-AP08905
Host	Rabbit
Isotype	IgG
Size	20ul, 50ul, 100ul
Immunogen	The antiserum was produced against synthesized peptide derived from human PPP1R11. AA range:71-120
Mol wt	13953
Species reactivity	Human, Mouse, Rat
Clonality	Polyclonal
Recommended application	IHC-p, ELISA
Concentration	1 mg/ml
Full name	Tctex5 Antibody
Synonyms	PPP1R11; HCGV; TCTE5; Protein phosphatase 1 regulatory subunit 11; Hemochromatosis candidate gene V protein; HCG V; Protein phosphatase inhibitor 3

This product is for research use only, not for use in human, therapeutic or diagnostic procedure.

Background

PPP1R11 (protein phosphatase 1 regulatory inhibitor subunit 11) encodes a specific inhibitor of protein phosphatase-1 (PP1) with a differential sensitivity toward the metal-independent and metal-dependent forms of PP1. PPP1R11 is located within the major histocompatibility complex class I region on chromosome 6.

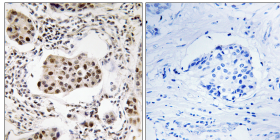
Recommended Dilution

IHC: 1: 100 - 1: 300

ELISA: 1: 40000

Not yet tested in other applications.

Images



Immunohistochemistry analysis of paraffin-embedded human breast carcinoma tissue, using PPP1R11 Antibody. The picture on the right is blocked with the synthesized peptide.

Storage

-20°C for one year