

TDE1 Polyclonal Antibody

Description

Product type	Primary Antibody
Code	BT-AP08907
Host	Rabbit
Isotype	IgG
Size	20ul, 50ul, 100ul
Immunogen	The antiserum was produced against synthesized peptide derived from human SERC3. AA range:361-410
Mol wt	52580
Species reactivity	Human, Mouse, Rat
Clonality	Polyclonal
Recommended application	WB, IHC-p, IF, ELISA
Concentration	1 mg/ml
Full name	TDE1 Antibody
Synonyms	SERINC3; DIFF33; TDE1; SBB199; Serine incorporator 3; Tumor differentially expressed protein 1

This product is for research use only, not for use in human, therapeutic or diagnostic procedure.

Background

SERINC3 (Serine Incorporator 3) is a Protein Coding gene. Diseases associated with SERINC3 include hiv-1 and carbuncle. Gene Ontology (GO) annotations related to this gene include L-serine transmembrane transporter activity. An important paralog of this gene is SERINC2. Restriction factor required to restrict infectivity of lentiviruses, such as HIV-1: acts by inhibiting an early step of viral infection. Impairs the penetration of the viral particle into the cytoplasm (PubMed: 26416733, PubMed: 26416734).

Recommended Dilution

WB: 1: 500 - 1: 2000

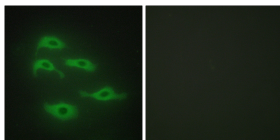
IHC: 1: 100 - 1: 300

IF: 1: 200 - 1: 1000

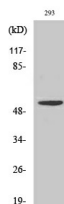
ELISA: 1: 20000

Not yet tested in other applications.

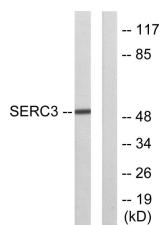
Images



Immunofluorescence analysis of HepG2 cells, using SERC3 Antibody. The picture on the right is blocked with the synthesized peptide.



Western Blot analysis of various cells using TDE1 Polyclonal Antibody



Western blot analysis of lysates from 293 cells, using SERC3 Antibody. The lane on the right is blocked with the synthesized peptide.

Storage

-20°C for one year

501 Changsheng S Rd, Nanhu Dist, Jiaxing, Zhejiang, China

Tel: 86 21 31007137 | E-mail: save@bt-laboratory.com | www.bt-laboratory.com