

TDE2L Polyclonal Antibody

Description

Product type	Primary Antibody
Code	BT-AP08908
Host	Rabbit
Isotype	IgG
Size	20ul, 50ul, 100ul
Immunogen	The antiserum was produced against synthesized peptide derived from human SERC2. AA range:341-390
Mol wt	50871
Species reactivity	Human, Mouse, Rat
Clonality	Polyclonal
Recommended application	WB, IHC-p, IF, ELISA
Concentration	1 mg/ml
Full name	TDE2L Antibody
Synonyms	SERINC2; TDE2L; FKSG84; Serine incorporator 2; Tumor differentially expressed protein 2-like

This product is for research use only, not for use in human, therapeutic or diagnostic procedure.

Background

SERINC2 (Serine Incorporator 2) is a Protein Coding gene. Gene Ontology (GO) annotations related to this gene include L-serine transmembrane transporter activity. An important paralog of this gene is SERINC3.

Recommended Dilution

WB: 1: 500 - 1: 2000

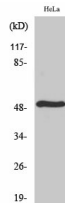
IHC: 1: 100 - 1: 300

IF: 1: 200 - 1: 1000

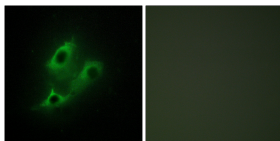
ELISA: 1: 40000

Not yet tested in other applications.

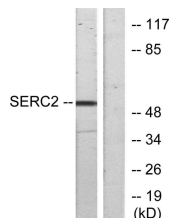
Images



Western Blot analysis of various cells using TDE2L Polyclonal Antibody



Immunofluorescence analysis of NIH/3T3 cells, using SERC2 Antibody. The picture on the right is blocked with the synthesized peptide.



Western blot analysis of lysates from HeLa cells, using SERC2 Antibody. The lane on the right is blocked with the synthesized peptide.

Storage

-20°C for one year

501 Changsheng S Rd, Nanhu Dist, Jiaxing, Zhejiang, China

Tel: 86 21 31007137 | E-mail: save@bt-laboratory.com | www.bt-laboratory.com