

EphB3 Polyclonal Antibody

Description

Product type	Primary Antibody
Code	BT-AP08910
Host	Rabbit
Isotype	IgG
Size	20ul, 50ul, 100ul
Immunogen	Synthetic peptide from human protein at AA range: 650-700
Mol wt	N/A
Species reactivity	Human, Mouse, Rat
Clonality	Polyclonal
Recommended application	IHC-p, IF, ELISA
Concentration	1 mg/ml
Full name	Ephrin type-B receptor 3
Synonyms	Ephrin type-B receptor 3 ;EC 2.7.10.1;EPH-like tyrosine kinase 2;EPH-like kinase 2;Embryonic kinase 2;EK2;hEK2;Tyrosine-protein kinase TYRO6; Ephrin type-B receptor 3; EC 2.7.10.1; EPH-like tyrosine kinase 2; EPH-like kinase 2; Embryonic kinase 2; EK2; hEK2; Tyrosine-protein kinase TYRO6

This product is for research use only, not for use in human, therapeutic or diagnostic procedure.

Background

Ephrin receptors and their ligands, the ephrins, mediate numerous developmental processes, particularly in the nervous system. Based on their structures and sequence relationships, ephrins are divided into the ephrin-A (EFNA) class, which are anchored to the membrane by a glycosylphosphatidylinositol linkage, and the ephrin-B (EFNB) class, which are transmembrane proteins. The Eph family of receptors are divided into two groups based on the similarity of their extracellular domain sequences and their affinities for binding ephrin-A and ephrin-B ligands. Ephrin receptors make up the largest subgroup of the receptor tyrosine kinase (RTK) family. This gene encodes a receptor for ephrin-B family members.

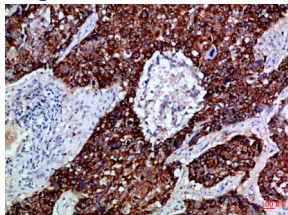
Recommended Dilution

IHC-p: 1: 50 - 1: 200

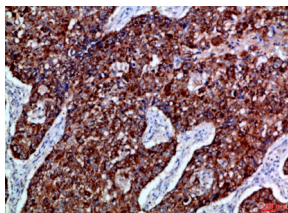
ELISA: 1: 10000 - 1: 20000

Not yet tested in other applications.

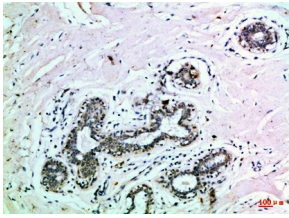
Images



Immunohistochemical analysis of paraffin-embedded Human-breast, antibody was diluted at 1:100



Immunohistochemical analysis of paraffin-embedded Human-lung-cancer, antibody was diluted at 1:100



Immunohistochemical analysis of paraffin-embedded Human-lung-cancer, antibody was diluted at 1:100

Storage

-20°C for 1 year

501 Changsheng S Rd, Nanhu Dist, Jiaxing, Zhejiang, China

Tel: 86 21 31007137 | E-mail: save@bt-laboratory.com | www.bt-laboratory.com