

TEL Polyclonal Antibody

Description

| | |
|--------------------------------|--|
| Product type | Primary Antibody |
| Code | BT-AP08918 |
| Host | Rabbit |
| Isotype | IgG |
| Size | 20ul, 50ul, 100ul |
| Immunogen | The antiserum was produced against synthesized peptide derived from human Tel. AA range:223-272 |
| Mol wt | 53000 |
| Species reactivity | Human |
| Clonality | Polyclonal |
| Recommended application | WB, ELISA |
| Concentration | 1 mg/ml |
| Full name | TEL Antibody |
| Synonyms | ETV6; TEL; TEL1; Transcription factor ETV6; ETS translocation variant 6; ETS-related protein Tel1; Tel |

This product is for research use only, not for use in human, therapeutic or diagnostic procedure.

Background

ETV6 encodes an ETS family transcription factor. The product of ETV6 contains two functional domains: a N-terminal pointed (PNT) domain that is involved in protein-protein interactions with itself and other proteins, and a C-terminal DNA-binding domain. Gene knockout studies in mice suggest that it is required for hematopoiesis and maintenance of the developing vascular network. ETV6 is known to be involved in a large number of chromosomal rearrangements associated with leukemia and congenital fibrosarcoma.

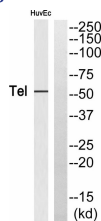
Recommended Dilution

WB: 1: 500 - 1: 2000

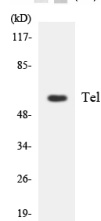
ELISA: 1: 10000

Not yet tested in other applications.

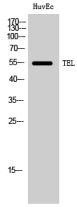
Images



Western blot analysis of Tel Antibody. The lane on the right is blocked with the Tel peptide.



Western blot analysis of the lysates from HeLa cells using Tel antibody.



Western Blot analysis of HuvEc cells using TEL Polyclonal Antibody

Storage

-20°C for one year

501 Changsheng S Rd, Nanhu Dist, Jiaxing, Zhejiang, China

Tel: 86 21 31007137 | E-mail: save@bt-laboratory.com | www.bt-laboratory.com