

Ephrin-B1/2(Phospho Tyr329) Polyclonal Antibody

Description

Product type	Primary Antibody
Code	BT-AP08919
Host	Rabbit
Isotype	IgG
Size	20ul, 50ul, 100ul
Immunogen	The antiserum was produced against synthesized peptide derived from human Ephrin B1/B2 around the phosphorylation site of Tyr329. AA range:295-344
Mol wt	36923
Species reactivity	Human, Mouse, Rat
Clonality	Polyclonal
Recommended application	IHC-p, IF, ELISA
Concentration	1 mg/ml
Full name	Ephrin-B1/2
Synonyms	Ephrin-B1/2; EFNB1; EFL3; EPLG2; LERK2; Ephrin-B1; EFL-3; ELK ligand; ELK-L; EPH-related receptor tyrosine kinase ligand 2; LERK-2; EFNB2; EPLG5; HTKL; LERK5; Ephrin-B2; EPH-related receptor tyrosine kinase ligand 5; LERK-5; HTK ligand; HTK-L

This product is for research use only, not for use in human, therapeutic or diagnostic procedure.

Background

The protein encoded by this gene is a type I membrane protein and a ligand of Eph-related receptor tyrosine kinases. It may play a role in cell adhesion and function in the development or maintenance of the nervous system.

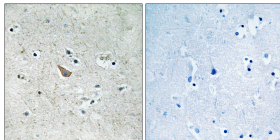
Recommended Dilution

IHC-p: 1: 100 - 1: 300

ELISA: 1: 10000

Not yet tested in other applications.

Images



Immunohistochemistry analysis of paraffin-embedded human brain, using Ephrin B1/B2 (Phospho-Tyr329) Antibody. The picture on the right is blocked with the phospho peptide.

Storage

-20°C for 1 year