

TEM7 Polyclonal Antibody

Description

Product type	Primary Antibody
Code	BT-AP08921
Host	Rabbit
Isotype	IgG
Size	20ul, 50ul, 100ul
Immunogen	The antiserum was produced against synthesized peptide derived from human PLXDC1. AA range:71-120
Mol wt	55760
Species reactivity	Human
Clonality	Polyclonal
Recommended application	IHC-p, ELISA
Concentration	1 mg/ml
Full name	TEM7 Antibody
Synonyms	PLXDC1; TEM3; TEM7; Plexin domain-containing protein 1; Tumor endothelial marker 3; Tumor endothelial marker 7

This product is for research use only, not for use in human, therapeutic or diagnostic procedure.

Background

PLXDC1, also named as TEM3 and TEM7, belongs to the plexin family. PLXDC1 may interact with cortactin. PLXDC1 (TEM7) is identified through serial analysis of gene expression on endothelial cells isolated from human normal and malignant colorectal tissues. The antibody recognizes isoform1 and isoform4 of PLXDC1.

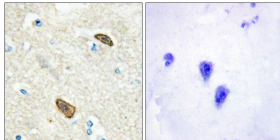
Recommended Dilution

IHC: 1: 100 - 1: 300

ELISA: 1: 20000

Not yet tested in other applications.

Images



Immunohistochemistry analysis of paraffin-embedded human brain, using PLXDC1 Antibody. The picture on the right is blocked with the synthesized peptide.

Storage

-20°C for one year