

Tensin-2 Polyclonal Antibody

Description

Product type	Primary Antibody
Code	BT-AP08928
Host	Rabbit
Isotype	IgG
Size	20ul, 50ul, 100ul
Immunogen	The antiserum was produced against synthesized peptide derived from human Tensin-2. AA range:439-488
Mol wt	152580
Species reactivity	Human, Mouse
Clonality	Polyclonal
Recommended application	WB, ELISA
Concentration	1 mg/ml
Full name	Tensin-2 Antibody
Synonyms	TENC1; KIAA1075; TNS2; Tensin-like C1 domain-containing phosphatase; C1 domain-containing phosphatase and tensin homolog; C1-TEN; Tensin-2

This product is for research use only, not for use in human, therapeutic or diagnostic procedure.

Background

The protein encoded by TNS2 (tensin 2) belongs to the tensin family. Tensin is a focal adhesion molecule that binds to actin filaments and participates in signaling pathways. This protein plays a role in regulating cell migration. Alternative splicing occurs at TNS2 and three transcript variants encoding three distinct isoforms have been identified.

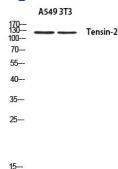
Recommended Dilution

WB: 1: 500 - 1: 2000

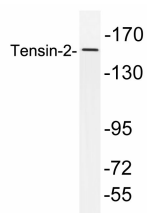
ELISA: 1: 10000

Not yet tested in other applications.

Images



Western blot analysis of A549 3T3 using Tensin-2 antibody. Antibody was diluted at 1:500. Secondary antibody was diluted at 1:20000



Western blot analysis of lysates from HepG2 cells, using Tensin-2 antibody.

Storage

-20°C for one year

501 Changsheng S Rd, Nanhu Dist, Jiaxing, Zhejiang, China

Tel: 86 21 31007137 | E-mail: save@bt-laboratory.com | www.bt-laboratory.com