

## Tensin3 Polyclonal Antibody

### Description

Product type	Primary Antibody
Code	BT-AP08929
Host	Rabbit
Isotype	IgG
Size	20ul, 50ul, 100ul
Immunogen	The antiserum was produced against synthesized peptide derived from human TENS3. AA range:541-590
Mol wt	155266
Species reactivity	Human
Clonality	Polyclonal
Recommended application	IHC-p, IF, ELISA
Concentration	1 mg/ml
Full name	Tensin3 Antibody
Synonyms	TNS3; TEM6; TENS1; TPP; Tensin-3; Tensin-like SH2 domain-containing protein 1; Tumor endothelial marker 6

This product is for research use only, not for use in human, therapeutic or diagnostic procedure.

### Background

TNS3, also named as TEM6, TENS1 and TPP, may play a role in actin remodeling. It is involved in the dissociation of the integrin-tensin-actin complex. EGF activates TNS4 and down-regulates TNS3 which results in capping the tail of ITGB1. TNS3 seems to be involved in mammary cell migration. It may be involved in cell migration and bone development. The antibody recognizes all the isoforms of TNS3.

### Recommended Dilution

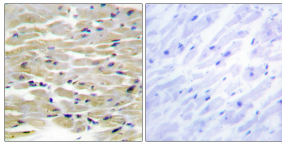
IHC: 1: 100 - 1: 300

IF: 1: 200 - 1: 1000

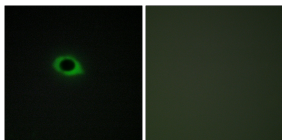
ELISA: 1: 20000

Not yet tested in other applications.

### Images



Immunohistochemistry analysis of paraffin-embedded human heart tissue, using TENS3 Antibody. The picture on the right is blocked with the synthesized peptide.



Immunofluorescence analysis of COS7 cells, using TENS3 Antibody. The picture on the right is blocked with the synthesized peptide.

### Storage

-20°C for one year