

TESK1 Polyclonal Antibody

Description

Product type	Primary Antibody
Code	BT-AP08935
Host	Rabbit
Isotype	IgG
Size	20ul, 50ul, 100ul
Immunogen	The antiserum was produced against synthesized peptide derived from human TESK1. AA range:181-230
Mol wt	67712
Species reactivity	Human, Mouse, Rat
Clonality	Polyclonal
Recommended application	WB, ELISA
Concentration	1 mg/ml
Full name	TESK1 Antibody
Synonyms	TESK1; Dual specificity testis-specific protein kinase 1; Testicular protein kinase 1

This product is for research use only, not for use in human, therapeutic or diagnostic procedure.

Background

TESK1 (testis-specific kinase 1) product is a serine/threonine protein kinase that contains an N-terminal protein kinase domain and a C-terminal proline-rich domain. Its protein kinase domain is most closely related to those of the LIM motif-containing protein kinases (LIMKs). The encoded protein can phosphorylate myelin basic protein and histone in vitro. The testicular germ cell-specific expression and developmental pattern of expression of the mouse gene suggests that TESK1 plays an important role at and after the meiotic phase of spermatogenesis. Alternative splicing results in multiple transcript variants encoding different isoforms.

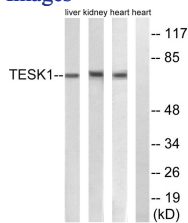
Recommended Dilution

WB: 1: 500 - 1: 2000

ELISA: 1: 40000

Not yet tested in other applications.

Images



Western blot analysis of lysates from rat heart, rat kidney, and rat liver cells, using TESK1 Antibody. The lane on the right is blocked with the synthesized peptide.

Storage

-20°C for one year