

EPYC Polyclonal Antibody

Description

Product type	Primary Antibody
Code	BT-AP08937
Host	Rabbit
Isotype	IgG
Size	20ul, 50ul, 100ul
Immunogen	Synthesized peptide derived from human protein . at AA range: 140-220
Mol wt	N/A
Species reactivity	Human, Mouse
Clonality	Polyclonal
Recommended application	WB, ELISA
Concentration	1 mg/ml
Full name	Epiphycan
Synonyms	Epiphycan ;Dermatan sulfate proteoglycan 3;Proteoglycan-Lb;PG-Lb;Small chondroitin/dermatan sulfate proteoglycan

This product is for research use only, not for use in human, therapeutic or diagnostic procedure.

Background

Dermatan sulfate proteoglycan 3 is a member of the small leucine-rich repeat proteoglycan family. This gene is composed of seven exons. It regulates fibrillogenesis by interacting with collagen fibrils and other extracellular matrix proteins.

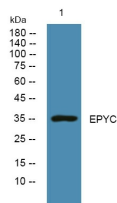
Recommended Dilution

WB: 1: 500 - 1: 2000

ELISA: 1: 5000 - 1: 20000

Not yet tested in other applications.

Images



Western blot analysis of lysates from PC12 cells, primary antibody was diluted at 1:1000, 4°C overnight

Storage

-20°C for 1 year