

IGS11 Polyclonal Antibody

Description

Product type	Primary Antibody
Code	BT-AP08939
Host	Rabbit
Isotype	IgG
Size	20ul, 50ul, 100ul
Immunogen	Synthesized peptide derived from human protein . at AA range: 110-190
Mol wt	N/A
Species reactivity	Human, Rat, Mouse
Clonality	Polyclonal
Recommended application	WB, ELISA
Concentration	1 mg/ml
Full name	Immunoglobulin superfamily member 11
Synonyms	Immunoglobulin superfamily member 11 (IgSF11;Brain and testis-specific immunoglobulin superfamily protein;Bt-IGSF;V-set and immunoglobulin domain-containing protein 3)

This product is for research use only, not for use in human, therapeutic or diagnostic procedure.

Background

IGSF11 is an immunoglobulin (Ig) superfamily member that is preferentially expressed in brain and testis. It shares significant homology with coxsackievirus and adenovirus receptor (CXADR; MIM 602621) and endothelial cell-selective adhesion molecule (ESAM).

Recommended Dilution

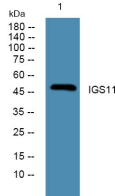
WB: 1: 500 - 1: 2000

ELISA: 1: 5000 - 1: 20000

ELISA: 1: 20000

Not yet tested in other applications.

Images



Western blot analysis of lysates from KB cells, primary antibody was diluted at 1:1000, 4°C overnight

Storage

-20°C for 1 year