

## TFE3 Polyclonal Antibody

### Description

|                                |  |
|--------------------------------|--|
| <b>Product type</b>            | Primary Antibody   |
| <b>Code</b>                    | BT-AP08948   |
| <b>Host</b>                    | Rabbit   |
| <b>Isotype</b>                 | IgG  |
| <b>Size</b>                    | 20ul, 50ul, 100ul  |
| <b>Immunogen</b>               | The antiserum was produced against synthesized peptide derived from human TFE3. AA range:101-150 |
| <b>Mol wt</b>                  | 61521  |
| <b>Species reactivity</b>      | Human, Mouse   |
| <b>Clonality</b>               | Polyclonal   |
| <b>Recommended application</b> | WB, IHC-p, ELISA   |
| <b>Concentration</b>           | 1 mg/ml  |
| <b>Full name</b>               | TFE3 Antibody  |
| <b>Synonyms</b>                | TFE3; BHLHE33; Transcription factor E3; Class E basic helix-loop-helix protein 33; bHLHe33       |

**This product is for research use only, not for use in human, therapeutic or diagnostic procedure.**

### Background

TFE3 (transcription factor binding to IGHM enhancer 3) encodes a basic helix-loop-helix domain-containing transcription factor that binds MUE3-type E-box sequences in the promoter of genes. The encoded protein promotes the expression of genes downstream of transforming growth factor beta (TGF-beta) signaling. TFE3 may be involved in chromosomal translocations in renal cell carcinomas and other cancers, resulting in the production of fusion proteins. Translocation partners include PRCC (papillary renal cell carcinoma), NONO (non-POU domain containing, octamer-binding), and ASPSCR1 (alveolar soft part sarcoma chromosome region, candidate 1), among other genes. Alternative splicing results in multiple transcript variants.

### Recommended Dilution

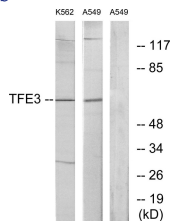
WB: 1: 500 - 1: 2000

IHC: 1: 100 - 1: 300

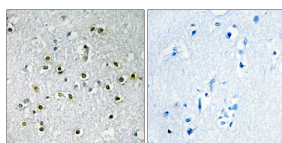
ELISA: 1: 20000

Not yet tested in other applications.

### Images



Western blot analysis of lysates from K562 and A549 cells, using TFE3 Antibody. The lane on the right is blocked with the synthesized peptide.



Immunohistochemistry analysis of paraffin-embedded human brain tissue, using TFE3 Antibody. The picture on the right is blocked with the synthesized peptide.

### Storage

-20°C for one year

501 Changsheng S Rd, Nanhu Dist, Jiaxing, Zhejiang, China

Tel: 86 21 31007137 | E-mail: [save@bt-laboratory.com](mailto:save@bt-laboratory.com) | [www.bt-laboratory.com](http://www.bt-laboratory.com)