

TFIIA- Alpha Polyclonal Antibody

Description

Product type	Primary Antibody
Code	BT-AP08951
Host	Rabbit
Isotype	IgG
Size	20ul, 50ul, 100ul
Immunogen	The antiserum was produced against synthesized peptide derived from human TF2A1. AA range:281-330
Mol wt	41514
Species reactivity	Human, Mouse, Rat
Clonality	Polyclonal
Recommended application	WB, IHC-p, ELISA
Concentration	1 mg/ml
Full name	TFIIA-alpha Antibody
Synonyms	GTF2A1; TF2A1; Transcription initiation factor IIA subunit 1; General transcription factor IIA subunit 1; TFIIAL; Transcription initiation factor TFIIA 42 kDa subunit; TFIIA-42

This product is for research use only, not for use in human, therapeutic or diagnostic procedure.

Background

Accurate transcription initiation on TATA-containing class II genes involves the ordered assembly of RNA polymerase II (POLR2A; MIM 180660) and several general initiation factors (summarized by DeJong and Roeder, 1993 [PubMed 8224848]). One of these factors is TFIIA, which when purified from HeLa extracts consists of 35-, 19-, and 12-kD subunits.

Recommended Dilution

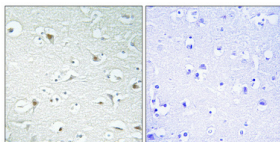
WB: 1: 500 - 1: 2000

IHC: 1: 100 - 1: 300

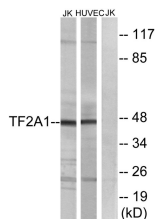
ELISA: 1: 40000

Not yet tested in other applications.

Images



Immunohistochemical analysis of paraffin-embedded Human brain. Antibody was diluted at 1:100(4° overnight). High-pressure and temperature Tris-EDTA,pH8.0 was used for antigen retrieval. Negative contrl (right) obtained from antibody was pre-absorbed by immunogen peptide.



Western blot analysis of lysates from Jurkat and HUVEC cells, using TF2A1 Antibody. The lane on the right is blocked with the synthesized peptide.

Storage

-20°C for one year

501 Changsheng S Rd, Nanhu Dist, Jiaxing, Zhejiang, China

Tel: 86 21 31007137 | E-mail: save@bt-laboratory.com | www.bt-laboratory.com