

TFIIE-Beta Polyclonal Antibody

Description

Product type	Primary Antibody
Code	BT-AP08953
Host	Rabbit
Isotype	IgG
Size	20ul, 50ul, 100ul
Immunogen	The antiserum was produced against synthesized peptide derived from human TF2E2. AA range:151-200
Mol wt	33044
Species reactivity	Human, Mouse
Clonality	Polyclonal
Recommended application	WB, IHC-p, ELISA
Concentration	1 mg/ml
Full name	TFIIE-beta Antibody
Synonyms	GTF2E2; TF2E2; Transcription initiation factor IIE subunit beta; TFIIE-beta; General transcription factor IIE subunit 2

This product is for research use only, not for use in human, therapeutic or diagnostic procedure.

Background

GTF2E2 (General Transcription Factor IIE Subunit 2) is a Protein Coding gene. Among its related pathways are Gene Expression and HIV Life Cycle. Gene Ontology (GO) annotations related to this gene include poly(A) RNA binding. Recruits TFIIH to the initiation complex and stimulates the RNA polymerase II C-terminal domain kinase and DNA-dependent ATPase activities of TFIIH. Both TFIIH and TFIIE are required for promoter clearance by RNA polymerase.

Recommended Dilution

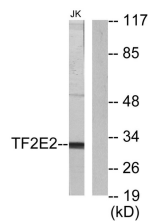
WB: 1: 500 - 1: 2000

IHC: 1: 100 - 1: 300

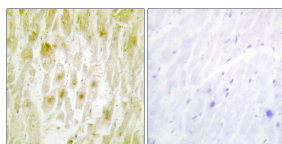
ELISA: 1: 20000

Not yet tested in other applications.

Images



Western blot analysis of lysates from Jurkat cells, using TF2E2 Antibody. The lane on the right is blocked with the synthesized peptide.



Immunohistochemistry analysis of paraffin-embedded human heart tissue, using TF2E2 Antibody. The picture on the right is blocked with the synthesized peptide.



Western Blot analysis of various cells using TFIIIE- β Polyclonal Antibody cells nucleus.

Storage

-20°C for one year

501 Changsheng S Rd, Nanhu Dist, Jiaxing, Zhejiang, China

Tel: 86 21 31007137 | E-mail: save@bt-laboratory.com | www.bt-laboratory.com