

TFPI Polyclonal Antibody

Description

| | |
|--------------------------------|--|
| Product type | Primary Antibody |
| Code | BT-AP08961 |
| Host | Rabbit |
| Isotype | IgG |
| Size | 20ul, 50ul, 100ul |
| Immunogen | The antiserum was produced against synthesized peptide derived from the C-terminal region of human TFPI. AA range:251-300 |
| Mol wt | 33440 |
| Species reactivity | Human |
| Clonality | Polyclonal |
| Recommended application | WB, ELISA |
| Concentration | 1 mg/ml |
| Full name | TFPI Antibody |
| Synonyms | TFPI; LACI; TFPI1; Tissue factor pathway inhibitor; TFPI; Extrinsic pathway inhibitor; EPI; Lipoprotein-associated coagulation inhibitor; LACI |

This product is for research use only, not for use in human, therapeutic or diagnostic procedure.

Background

TFPI encodes a Kunitz-type serine protease inhibitor that regulates the tissue factor (TF)-dependent pathway of blood coagulation. The coagulation process initiates with the formation of a factor VIIa-TF complex, which proteolytically activates additional proteases (factors IX and X) and ultimately leads to the formation of a fibrin clot. The product of this gene inhibits the activated factor X and VIIa-TF proteases in an autoregulatory loop. Inhibition of the encoded protein restores hemostasis in animal models of hemophilia. This gene encodes multiple protein isoforms that differ in their inhibitory activity, specificity and cellular localization.

Recommended Dilution

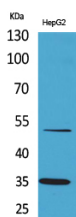
WB: 1: 500 - 1: 2000

ELISA: 1: 20000

Not yet tested in other applications.

Images

Western blot analysis of lysate from HepG2 cells, using TFPI Antibody.



Western Blot analysis of HepG2 cells using TFPI Polyclonal Antibody. Secondary antibody was diluted at 1:20000

Storage

-20°C for one year

501 Changsheng S Rd, Nanhu Dist, Jiaxing, Zhejiang, China

Tel: 86 21 31007137 | E-mail: save@bt-laboratory.com | www.bt-laboratory.com