

## TFPI-2 Polyclonal Antibody

### Description

<b>Product type</b>	Primary Antibody
<b>Code</b>	BT-AP08962
<b>Host</b>	Rabbit
<b>Isotype</b>	IgG
<b>Size</b>	20ul, 50ul, 100ul
<b>Immunogen</b>	The antiserum was produced against synthesized peptide derived from the C-terminal region of human TFPI2. AA range:186-235
<b>Mol wt</b>	26934
<b>Species reactivity</b>	Human
<b>Clonality</b>	Polyclonal
<b>Recommended application</b>	WB, ELISA
<b>Concentration</b>	1 mg/ml
<b>Full name</b>	TFPI-2 Antibody
<b>Synonyms</b>	TFPI2; Tissue factor pathway inhibitor 2; TFPI-2; Placental protein 5; PP5

**This product is for research use only, not for use in human, therapeutic or diagnostic procedure.**

### Background

TFPI2 encodes a member of the Kunitz-type serine proteinase inhibitor family. Tissue factor pathway inhibitor 2 can inhibit a variety of serine proteases including factor VIIa/tissue factor, factor Xa, plasmin, trypsin, chymotrypsin and plasma kallikrein. This gene has been identified as a tumor suppressor gene in several types of cancer. Alternative splicing results in multiple transcript variants.

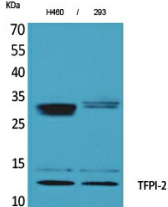
### Recommended Dilution

WB: 1: 500 - 1: 2000

ELISA: 1: 20000

Not yet tested in other applications.

### Images



Western Blot analysis of H460, 293 cells using TFPI-2 Polyclonal Antibody. Secondary antibody was diluted at 1:20000



Western blot analysis of lysate from H460 cells, using TFPI2 Antibody.

## Storage

-20°C for one year

501 Changsheng S Rd, Nanhu Dist, Jiaxing, Zhejiang, China

Tel: 86 21 31007137 | E-mail: [save@bt-laboratory.com](mailto:save@bt-laboratory.com) | [www.bt-laboratory.com](http://www.bt-laboratory.com)