

## TG1019 Polyclonal Antibody

### Description

<b>Product type</b>	Primary Antibody
<b>Code</b>	BT-AP08964
<b>Host</b>	Rabbit
<b>Isotype</b>	IgG
<b>Size</b>	20ul, 50ul, 100ul
<b>Immunogen</b>	The antiserum was produced against synthesized peptide derived from human OXER1. AA range:212-261
<b>Mol wt</b>	45811
<b>Species reactivity</b>	Human
<b>Clonality</b>	Polyclonal
<b>Recommended application</b>	WB, IHC-p, IF, ELISA
<b>Concentration</b>	1 mg/ml
<b>Full name</b>	TG1019 Antibody
<b>Synonyms</b>	OXER1; GPR170; TG1019; Oxoeicosanoid receptor 1; 5-oxo-ETE G-protein coupled receptor; G-protein coupled receptor 170; G-protein coupled receptor R527; G-protein coupled receptor TG1019

**This product is for research use only, not for use in human, therapeutic or diagnostic procedure.**

### Background

OXER1 (Oxoeicosanoid (OXE) Receptor 1) is a Protein Coding gene. Among its related pathways are Signaling by GPCR and Peptide ligand-binding receptors. Gene Ontology (GO) annotations related to this gene include G-protein coupled receptor activity and 5-hydroxy-6E,8Z,11Z,14Z-icosatetraenoic acid binding. An important paralog of this gene is HCAR3. Receptor for eicosanoids and polyunsaturated fatty acids such as 5-oxo-6E,8Z,11Z,14Z-eicosatetraenoic acid (5-OXO-ETE), 5(S)-hydroperoxy-6E,8Z,11Z,14Z-eicosatetraenoic acid (5(S)-HPETE) and arachidonic acid. Seems to be coupled to the G(i)/G(o), families of heteromeric G proteins. Leukotriene and related receptors are activated by the endogenous ligands leukotriene (LT) B4, LTC4, LTD4, LTE4 and 12-HETE. Leukotrienes are lipid mediators synthesized from arachidonic acid by lipoxygenase enzymes. They are important in inflammatory signaling pathways.

### Recommended Dilution

WB: 1: 500 - 1: 2000

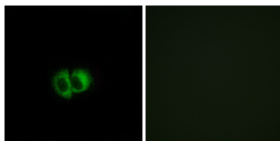
IHC: 1: 100 - 1: 300

IF: 1: 200 - 1: 1000

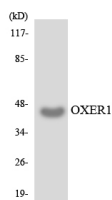
ELISA: 1: 10000

Not yet tested in other applications.

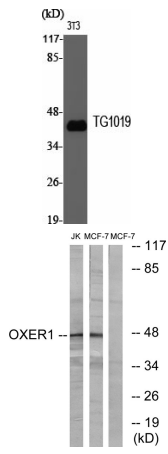
### Images



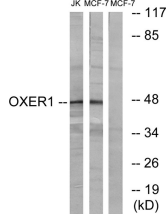
Immunofluorescence analysis of MCF7 cells, using OXER1 Antibody. The picture on the right is blocked with the synthesized peptide.



Western blot analysis of the lysates from HUVEC cells using OXER1 antibody.



Western Blot analysis of various cells using TG1019 Polyclonal Antibody



Western blot analysis of lysates from MCF-7 and Jurkat cells, using OXER1 Antibody. The lane on the right is blocked with the synthesized peptide.

### Storage

-20°C for one year

501 Changsheng S Rd, Nanhu Dist, Jiaxing, Zhejiang, China

Tel: 86 21 31007137 | E-mail: [save@bt-laboratory.com](mailto:save@bt-laboratory.com) | [www.bt-laboratory.com](http://www.bt-laboratory.com)