

## TGF Alpha Polyclonal Antibody

### Description

<b>Product type</b>	Primary Antibody
<b>Code</b>	BT-AP08968
<b>Host</b>	Rabbit
<b>Isotype</b>	IgG
<b>Size</b>	20ul, 50ul, 100ul
<b>Immunogen</b>	The antiserum was produced against synthesized peptide derived from the Internal region of human TGFA. AA range:50-100
<b>Mol wt</b>	17006
<b>Species reactivity</b>	Human, Mouse, Rat
<b>Clonality</b>	Polyclonal
<b>Recommended application</b>	WB, ELISA
<b>Concentration</b>	1 mg/ml
<b>Full name</b>	TGFAlpha Antibody
<b>Synonyms</b>	TGFA; Protransforming growth factor alpha

This product is for research use only, not for use in human, therapeutic or diagnostic procedure.

### Background

TGFA (transforming growth factor alpha) encodes a growth factor that is a ligand for the epidermal growth factor receptor, which activates a signaling pathway for cell proliferation, differentiation and development. This protein may act as either a transmembrane-bound ligand or a soluble ligand. TGFA has been associated with many types of cancers, and it may also be involved in some cases of cleft lip/palate. Alternatively spliced transcript variants encoding different isoforms have been found for TGFA.

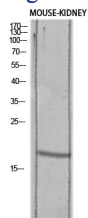
### Recommended Dilution

WB: 1: 500 - 1: 2000

ELISA: 1: 10000

Not yet tested in other applications.

### Images



Western blot analysis of MOUSE-KIDNEY lysis using TGFA antibody. Antibody was diluted at 1:500. Secondary antibody was diluted at 1:20000

### Storage

-20°C for one year