

TGF Beta RI Polyclonal Antibody

Description

Product type	Primary Antibody
Code	BT-AP08970
Host	Rabbit
Isotype	IgG
Size	20ul, 50ul, 100ul
Immunogen	The antiserum was produced against synthesized peptide derived from human TGF beta Receptor I. AA range:131-180
Mol wt	55960
Species reactivity	Human, Mouse, Rat
Clonality	Polyclonal
Recommended application	WB, IF, ELISA
Concentration	1 mg/ml
Full name	TGFbeta RI Antibody
Synonyms	TGFBR1; ALK5; SKR4; TGF-beta receptor type-1; TGFR-1; Activin A receptor type II-like protein kinase of 53kD; Activin receptor-like kinase 5; ALK-5; ALK5; Serine/threonine-protein kinase receptor R4;

This product is for research use only, not for use in human, therapeutic or diagnostic procedure.

Background

TGF-beta receptor type-1 encoded by TGFBR1 forms a heteromeric complex with type II TGF-beta receptors when bound to TGF-beta, transducing the TGF-beta signal from the cell surface to the cytoplasm. The TGF-beta receptor type-1 is a serine/threonine protein kinase. Mutations in this gene have been associated with Loeys-Dietz aortic aneurysm syndrome (LDAS). Multiple transcript variants encoding different isoforms have been found for this gene.

Recommended Dilution

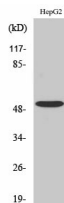
WB: 1: 500 - 1: 2000

IF: 1: 200 - 1: 1000

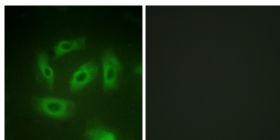
ELISA: 1: 10000

Not yet tested in other applications.

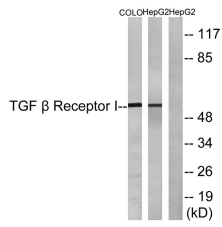
Images



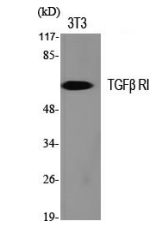
Western Blot analysis of COLO205 cells using TGFβ RI Polyclonal Antibody diluted at 1:500



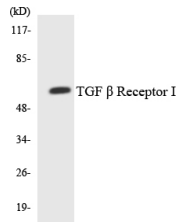
Immunofluorescence analysis of HeLa cells, using TGF beta Receptor I Antibody. The picture on the right is blocked with the synthesized peptide.



Western blot analysis of lysates from HepG2 and COLO cells, using TGF beta Receptor I Antibody.
The lane on the right is blocked with the synthesized peptide.



Western Blot analysis of various cells using TGFβ RI Polyclonal Antibody diluted at 1:500



Western blot analysis of the lysates from HeLa cells using TGF β Receptor I antibody.

Storage

-20°C for one year

501 Changsheng S Rd, Nanhu Dist, Jiaxing, Zhejiang, China

Tel: 86 21 31007137 | E-mail: save@bt-laboratory.com | www.bt-laboratory.com