

TGF Beta RII Polyclonal Antibody

Description

Product type	Primary Antibody
Code	BT-AP08972
Host	Rabbit
Isotype	IgG
Size	20ul, 50ul, 100ul
Immunogen	The antiserum was produced against synthesized peptide derived from human TGF beta Receptor II. AA range:191-240
Mol wt	64568
Species reactivity	Human, Mouse
Clonality	Polyclonal
Recommended application	WB, IHC-p, ELISA
Concentration	1 mg/ml
Full name	TGFbeta RII Antibody
Synonyms	TGFBR2; TGF-beta receptor type-2; TGFR-2; TGF-beta type II receptor; Transforming growth factor-beta receptor type II; TGF-beta receptor type II; TbetaR-II

This product is for research use only, not for use in human, therapeutic or diagnostic procedure.

Background

TGFBR2 encodes a member of the Ser/Thr protein kinase family and the TGFβ receptor subfamily. The TGF-beta receptor type-2 is a transmembrane protein that has a protein kinase domain, forms a heterodimeric complex with another receptor protein, and binds TGF-beta. This receptor/ligand complex phosphorylates proteins, which then enter the nucleus and regulate the transcription of a subset of genes related to cell proliferation. Mutations in this gene have been associated with Marfan Syndrome, Loeys-Deitz Aortic Aneurysm Syndrome, and the development of various types of tumors. Alternatively spliced transcript variants encoding different isoforms have been characterized.

Recommended Dilution

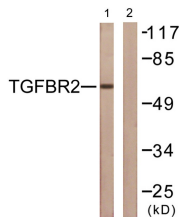
WB: 1: 500 - 1: 2000

IHC: 1: 100 - 1: 300

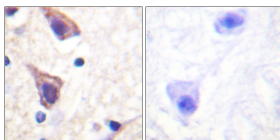
ELISA: 1: 5000

Not yet tested in other applications.

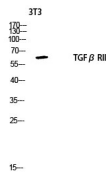
Images



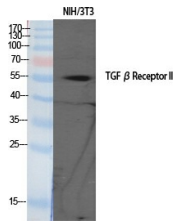
Western blot analysis of lysates from NIH/3T3 cells, using TGF beta Receptor II Antibody. The lane on the right is blocked with the synthesized peptide.



Immunohistochemistry analysis of paraffin-embedded human brain tissue, using TGF beta Receptor II Antibody. The picture on the right is blocked with the synthesized peptide.



Western blot analysis of 3T3 lysis using TGF β RII antibody. Antibody was diluted at 1:1000



Western Blot analysis of various cells using TGF β RII Polyclonal Antibody diluted at 1:1000

Storage

-20°C for one year

501 Changsheng S Rd, Nanhu Dist, Jiaxing, Zhejiang, China

Tel: 86 21 31007137 | E-mail: save@bt-laboratory.com | www.bt-laboratory.com