

ERR1 Polyclonal Antibody

Description

Product type	Primary Antibody
Code	BT-AP08982
Host	Rabbit
Isotype	IgG
Size	20ul, 50ul, 100ul
Immunogen	Synthesized peptide derived from human protein . at AA range: 160-240
Mol wt	N/A
Species reactivity	Human, Rat, Mouse
Clonality	Polyclonal
Recommended application	WB, ELISA
Concentration	1 mg/ml
Full name	Steroid hormone receptor ERR1
Synonyms	Steroid hormone receptor ERR1 ;Estrogen receptor-like 1;Estrogen-related receptor alpha;ERR-alpha;Nuclear receptor subfamily 3 group B member 1

This product is for research use only, not for use in human, therapeutic or diagnostic procedure.

Background

The protein encoded by this gene is a nuclear receptor that is closely related to the estrogen receptor. This protein acts as a site-specific transcription regulator and has been also shown to interact with estrogen and the transcription factor TFIIB by direct protein-protein contact. The binding and regulatory activities of this protein have been demonstrated in the regulation of a variety of genes including lactoferrin, osteopontin, medium-chain acyl coenzyme A dehydrogenase (MCAD) and thyroid hormone receptor genes. A processed pseudogene of ESRRRA is located on chromosome 13q12.1. Alternatively spliced transcript variants have been found for this gene.

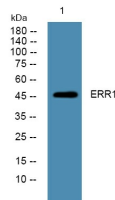
Recommended Dilution

WB: 1: 500 - 1: 2000

ELISA: 1: 5000 - 1: 20000

Not yet tested in other applications.

Images



Western blot analysis of lysates from DU145 cells, primary antibody was diluted at 1:1000, 4°C overnight

Storage

-20°C for 1 year