

TH Polyclonal Antibody

Description

Product type	Primary Antibody
Code	BT-AP08988
Host	Rabbit
Isotype	IgG
Size	20ul, 50ul, 100ul
Immunogen	The antiserum was produced against synthesized peptide derived from human Tyrosine Hydroxylase. AA range:10-59
Mol wt	58524
Species reactivity	Human, Mouse, Rat
Clonality	Polyclonal
Recommended application	WB, IHC-p, IF, ELISA
Concentration	1 mg/ml
Full name	TH Antibody
Synonyms	TH; TYH; Tyrosine 3-monoxygenase; Tyrosine 3-hydroxylase; TH

This product is for research use only, not for use in human, therapeutic or diagnostic procedure.

Background

Tyrosine 3-monoxygenase encoded by TH is involved in the conversion of tyrosine to dopamine. It is the rate-limiting enzyme in the synthesis of catecholamines, hence plays a key role in the physiology of adrenergic neurons. Mutations in this gene have been associated with autosomal recessive Segawa syndrome. Alternatively spliced transcript variants encoding different isoforms have been noted for this gene.

Recommended Dilution

WB: 1: 500 - 1: 2000

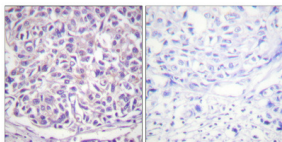
IHC: 1: 100 - 1: 300

IF: 1: 200 - 1: 1000

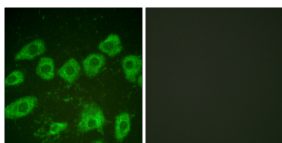
ELISA: 1: 10000

Not yet tested in other applications.

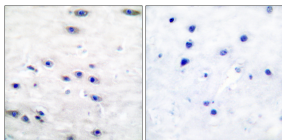
Images



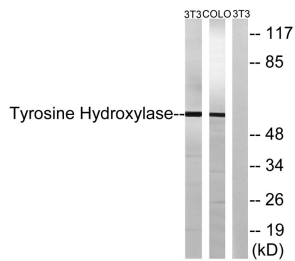
Immunohistochemical analysis of paraffin-embedded Human breast cancer. Antibody was diluted at 1:100(4° overnight). High-pressure and temperature Tris-EDTA,pH8.0 was used for antigen retrieval. Negative control (right) obtained from antibody was pre-absorbed by immunogen peptide.



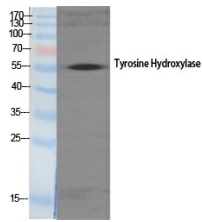
Immunofluorescence analysis of HUVEC cells, using Tyrosine Hydroxylase Antibody. The picture on the right is blocked with the synthesized peptide.



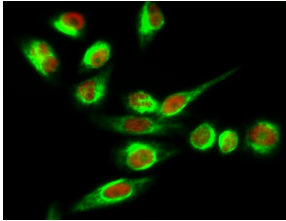
Immunohistochemistry analysis of paraffin-embedded human brain tissue, using Tyrosine Hydroxylase Antibody. The picture on the right is blocked with the synthesized peptide.



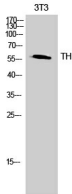
Western blot analysis of lysates from NIH/3T3/COLO cells, treated with Forskolin 40nM 30', using Tyrosine Hydroxylase Antibody. The lane on the right is blocked with the synthesized peptide.



Western Blot analysis of various cells using TH Polyclonal Antibody



Immunofluorescence analysis of HeLa cell. 1, TH Polyclonal Antibody (red) was diluted at 1:200 (4° overnight). GAPDH Monoclonal Antibody (2B8) (green) was diluted at 1:200 (4° overnight). 2, Goat Anti Rabbit Alexa Fluor 594 was diluted at 1:1000 (room temperature, 50min). Goat Anti Mouse Alexa Fluor 488 was diluted at 1:1000 (room temperature, 50min).



Western Blot analysis of 3T3 cells using TH Polyclonal Antibody

Storage

-20°C for one year

501 Changsheng S Rd, Nanhu Dist, Jiaxing, Zhejiang, China

Tel: 86 21 31007137 | E-mail: save@bt-laboratory.com | www.bt-laboratory.com