

THAP4 Polyclonal Antibody

Description

| | |
|--------------------------------|---|
| Product type | Primary Antibody |
| Code | BT-AP08992 |
| Host | Rabbit |
| Isotype | IgG |
| Size | 20ul, 50ul, 100ul |
| Immunogen | The antiserum was produced against synthesized peptide derived from human THAP4. AA range:341-390 |
| Mol wt | 62890 |
| Species reactivity | Human, Mouse, Rat, Monkey |
| Clonality | Polyclonal |
| Recommended application | WB, IHC-p, ELISA |
| Concentration | 1 mg/ml |
| Full name | THAP4 Antibody |
| Synonyms | THAP4; CGI-36; PP238; THAP domain-containing protein 4 |

This product is for research use only, not for use in human, therapeutic or diagnostic procedure.

Background

THAP4 (THAP Domain Containing 4) is a Protein Coding gene. Gene Ontology (GO) annotations related to this gene include nucleic acid binding.

Recommended Dilution

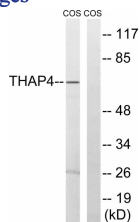
WB: 1: 500 - 1: 2000

IHC: 1: 100 - 1: 300

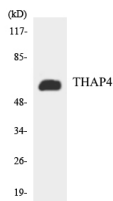
ELISA: 1: 40000

Not yet tested in other applications.

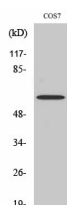
Images



Western blot analysis of lysates from COS7 cells, using THAP4 Antibody. The lane on the right is blocked with the synthesized peptide.



Western blot analysis of the lysates from HT-29 cells using THAP4 antibody.



Western Blot analysis of various cells using THAP4 Polyclonal Antibody

Storage

-20°C for one year

501 Changsheng S Rd, Nanhu Dist, Jiaxing, Zhejiang, China

Tel: 86 21 31007137 | E-mail: save@bt-laboratory.com | www.bt-laboratory.com