

IKK alpha(Phospho Thr23) Polyclonal Antibody

Description

Product type	Primary Antibody
Code	BT-AP08997
Host	Rabbit
Isotype	IgG
Size	20ul, 50ul, 100ul
Immunogen	The antiserum was produced against synthesized peptide derived from human IKK-alpha around the phosphorylation site of Thr23. AA range:15-64
Mol wt	84654
Species reactivity	Human, Mouse, Rat
Clonality	Polyclonal
Recommended application	WB, IHC-p, IF, ELISA
Concentration	1 mg/ml
Full name	Inhibitor of nuclear factor kappa-B kinase subunit alpha
Synonyms	Inhibitor of nuclear factor kappa-B kinase subunit alpha; CHUK; IKKA; TCF16; Inhibitor of nuclear factor kappa-B kinase subunit alpha; I-kappa-B kinase alpha; IKK-A; IKK-alpha; IkbKA; IkappaB kinase; Conserved helix-loop-helix ubiquitous kinase; I-kappa-B kinase 1; IKK1; Nuclear factor NF-kappa-B

This product is for research use only, not for use in human, therapeutic or diagnostic procedure.

Background

This gene encodes a member of the serine/threonine protein kinase family. The encoded protein| a component of a cytokine-activated protein complex that is an inhibitor of the essential transcription factor NF-kappa-B complex| phosphorylates sites that trigger the degradation of the inhibitor via the ubiquitination pathway| thereby activating the transcription factor.

Recommended Dilution

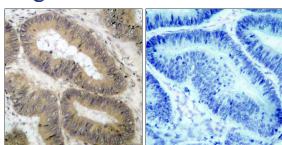
WB: 1: 500 - 1: 2000

IHC-p: 1: 100 - 1: 300

ELISA: 1: 5000

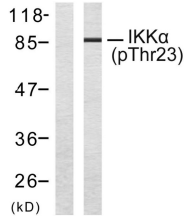
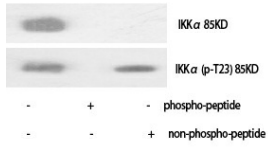
Not yet tested in other applications.

Images

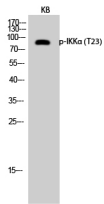


Immunohistochemistry analysis of paraffin-embedded human colon carcinoma, using IKK-alpha (Phospho-Thr23) Antibody. The picture on the right is blocked with the phospho peptide.

Western Blot analysis of various cells using Phospho-IKK α (T23) Polyclonal Antibody diluted at 1:1000



Western Blot analysis of KB cells using Phospho-IKK α (T23) Polyclonal Antibody diluted at 1:1000



Western blot analysis of lysates from MDA-MB-435 cells treated with EGF, using IKK-alpha (Phospho-Thr23) Antibody. The lane on the left is blocked with the phospho peptide.

Storage

-20°C for 1 year

501 Changsheng S Rd, Nanhu Dist, Jiaxing, Zhejiang, China

Tel: 86 21 31007137 | E-mail: save@bt-laboratory.com | www.bt-laboratory.com