

ESAM Polyclonal Antibody

Description

Product type	Primary Antibody
Code	BT-AP08999
Host	Rabbit
Isotype	IgG
Size	20ul, 50ul, 100ul
Immunogen	Synthesized peptide derived from part region of human protein
Mol wt	N/A
Species reactivity	Human, Rat, Mouse
Clonality	Polyclonal
Recommended application	WB, ELISA
Concentration	1 mg/ml
Full name	Endothelial cell-selective adhesion molecule
Synonyms	Endothelial cell-selective adhesion molecule

This product is for research use only, not for use in human, therapeutic or diagnostic procedure.

Background

Can mediate aggregation most likely through a homophilic molecular interaction.,Contains 1 Ig-like C2-type (immunoglobulin-like) domain.,Contains 1 Ig-like V-type (immunoglobulin-like) domain.,subunit:Interacts with BAIAP1.,tissue specificity:Highly expressed in endothelial cells.,

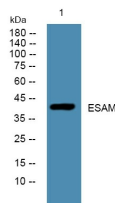
Recommended Dilution

WB: 1: 500 - 1: 2000

ELISA: 1: 5000 - 1: 20000

Not yet tested in other applications.

Images



Western blot analysis of lysates from Jarkat cells, primary antibody was diluted at 1:1000, 4°C overnight

Storage

-20°C for 1 year