

THP Polyclonal Antibody

Description

Product type	Primary Antibody
Code	BT-AP09001
Host	Rabbit
Isotype	IgG
Size	20ul, 50ul, 100ul
Immunogen	The antiserum was produced against synthesized peptide derived from human THP. AA range:329-378
Mol wt	69761
Species reactivity	Human
Clonality	Polyclonal
Recommended application	WB, ELISA
Concentration	1 mg/ml
Full name	THP Antibody
Synonyms	UMOD; Uromodulin; Tamm-Horsfall urinary glycoprotein; THP

This product is for research use only, not for use in human, therapeutic or diagnostic procedure.

Background

The protein encoded by UMOD (uromodulin) is the most abundant protein in mammalian urine under physiological conditions. Its excretion in urine follows proteolytic cleavage of the ectodomain of its glycosyl phosphatidylinositol-anchored counterpart that is situated on the luminal cell surface of the loop of Henle. This protein may act as a constitutive inhibitor of calcium crystallization in renal fluids. Excretion of this protein in urine may provide defense against urinary tract infections caused by uropathogenic bacteria. Defects in UMOD are associated with the renal disorders medullary cystic kidney disease-2 (MCKD2), glomerulocystic kidney disease with hyperuricemia and isosthenuria (GCKDHI), and familial juvenile hyperuricemic nephropathy (FJHN). Alternative splicing of UMOD results in multiple transcript variants.

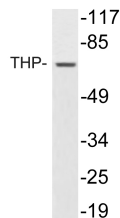
Recommended Dilution

WB: 1: 500 - 1: 2000

ELISA: 1: 10000

Not yet tested in other applications.

Images



Western blot analysis of lysate from K562 cells, using THP antibody.

Storage

-20°C for one year