

IKK alpha/beta(Phospho Ser176/177) Polyclonal Antibody

Description

Product type	Primary Antibody
Code	BT-AP09005
Host	Rabbit
Isotype	IgG
Size	20ul, 50ul, 100ul
Immunogen	The antiserum was produced against synthesized peptide derived from human IKK-alpha around the phosphorylation site of Ser177. AA range:151-200
Mol wt	84654;86564
Species reactivity	Human, Mouse, Rat
Clonality	Polyclonal
Recommended application	WB, IHC-p, IF, ELISA
Concentration	1 mg/ml
Full name	Inhibitor of nuclear factor kappa-B kinase subunit alpha
Synonyms	Inhibitor of nuclear factor kappa-B kinase subunit alpha; CHUK; IKKA; TCF16; Inhibitor of nuclear factor kappa-B kinase subunit alpha; I-kappa-B kinase alpha; IKK-A; IKK-alpha; IkbkA; IkappaB kinase; Conserved helix-loop-helix ubiquitous kinase; I-kappa-B kinase 1; IKK1; Nuclear factor NF-kappa-B

This product is for research use only, not for use in human, therapeutic or diagnostic procedure.

Background

This gene encodes a member of the serine/threonine protein kinase family. The encoded protein| a component of a cytokine-activated protein complex that is an inhibitor of the essential transcription factor NF-kappa-B complex| phosphorylates sites that trigger the degradation of the inhibitor via the ubiquitination pathway| thereby activating the transcription factor.

Recommended Dilution

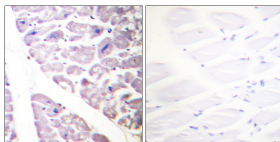
WB: 1: 500 - 1: 2000

IHC-p: 1: 100 - 1: 300

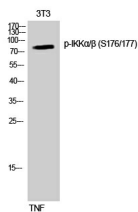
ELISA: 1: 10000

Not yet tested in other applications.

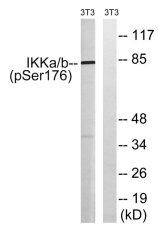
Images



Immunohistochemistry analysis of paraffin-embedded human heart, using IKK-alpha (Phospho-Ser176) /IKK-beta (Phospho-Ser177) Antibody. The picture on the right is blocked with the phospho peptide.



Western Blot analysis of NIH-3T3 cells using Phospho-IKK α / β (S176/177) Polyclonal Antibody diluted at 1:1000



Western blot analysis of lysates from NIH/3T3 cells treated with TNF 20ng/ml 30', using IKK-alpha (Phospho-Ser176) /IKK-beta (Phospho-Ser177) Antibody. The lane on the right is blocked with the phospho peptide.

Storage

-20°C for 1 year

501 Changsheng S Rd, Nanhu Dist, Jiaxing, Zhejiang, China

Tel: 86 21 31007137 | E-mail: save@bt-laboratory.com | www.bt-laboratory.com