

## TIF1 Alpha Polyclonal Antibody

### Description

<b>Product type</b>	Primary Antibody
<b>Code</b>	BT-AP09021
<b>Host</b>	Rabbit
<b>Isotype</b>	IgG
<b>Size</b>	20ul, 50ul, 100ul
<b>Immunogen</b>	The antiserum was produced against synthesized peptide derived from human TRIM24. AA range:1001-1050
<b>Mol wt</b>	116831
<b>Species reactivity</b>	Human, Mouse
<b>Clonality</b>	Polyclonal
<b>Recommended application</b>	WB, IHC-p, ELISA
<b>Concentration</b>	1 mg/ml
<b>Full name</b>	TIF1alpha Antibody
<b>Synonyms</b>	TRIM24; RNF82; TIF1; TIF1A; Transcription intermediary factor 1-alpha; TIF1-alpha; E3 ubiquitin-protein ligase TRIM24; RING finger protein 82; Tripartite motif-containing protein 24

**This product is for research use only, not for use in human, therapeutic or diagnostic procedure.**

### Background

Transcription intermediary factor 1-alpha encoded by TRIM24 mediates transcriptional control by interaction with the activation function 2 (AF2) region of several nuclear receptors, including the estrogen, retinoic acid, and vitamin D3 receptors. The protein localizes to nuclear bodies and is thought to associate with chromatin and heterochromatin-associated factors. The protein is a member of the tripartite motif (TRIM) family. The TRIM motif includes three zinc-binding domains - a RING, a B-box type 1 and a B-box type 2 - and a coiled-coil region. Two alternatively spliced transcript variants encoding different isoforms have been described for this gene.

### Recommended Dilution

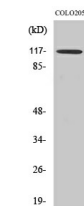
WB: 1: 500 - 1: 2000

IHC: 1: 100 - 1: 300

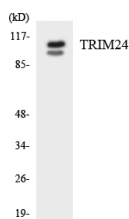
ELISA: 1: 20000

Not yet tested in other applications.

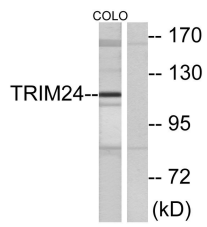
### Images



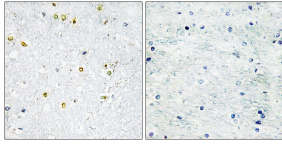
Western Blot analysis of COLO205 cells using TIF1 $\alpha$  Polyclonal Antibody diluted at 1:1000.  
Secondary antibody was diluted at 1:20000



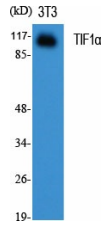
Western blot analysis of the lysates from HepG2 cells using TRIM24 antibody.



Western blot analysis of lysates from COLO cells, using TRIM24 Antibody. The lane on the right is blocked with the synthesized peptide.



Immunohistochemistry analysis of paraffin-embedded human brain tissue, using TRIM24 Antibody. The picture on the right is blocked with the synthesized peptide.



Western Blot analysis of various cells using TIF1 $\alpha$  Polyclonal Antibody diluted at 1:1000

### Storage

-20°C for one year

501 Changsheng S Rd, Nanhu Dist, Jiaxing, Zhejiang, China

Tel: 86 21 31007137 | E-mail: [save@bt-laboratory.com](mailto:save@bt-laboratory.com) | [www.bt-laboratory.com](http://www.bt-laboratory.com)