

TIGD1 Polyclonal Antibody

Description

Product type	Primary Antibody
Code	BT-AP09027
Host	Rabbit
Isotype	IgG
Size	20ul, 50ul, 100ul
Immunogen	The antiserum was produced against synthesized peptide derived from human TIGD1. AA range:251-300
Mol wt	67299
Species reactivity	Human
Clonality	Polyclonal
Recommended application	WB, ELISA
Concentration	1 mg/ml
Full name	TIGD1 Antibody
Synonyms	TIGD1; Tigger transposable element-derived protein 1

This product is for research use only, not for use in human, therapeutic or diagnostic procedure.

Background

The tigger transposable element derived 1 encoded by TIGD1 belongs to the tigger subfamily of the pogo superfamily of DNA-mediated transposons in humans. These proteins are related to DNA transposons found in fungi and nematodes, and more distantly to the Tc1 and mariner transposases. They are also very similar to the major mammalian centromere protein B. The exact function of this gene is not known.

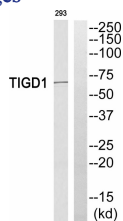
Recommended Dilution

WB: 1: 500 - 1: 2000

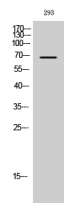
ELISA: 1: 10000

Not yet tested in other applications.

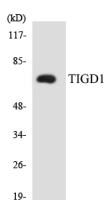
Images



Western blot analysis of TIGD1 Antibody. The lane on the right is blocked with the TIGD1 peptide.



Western Blot analysis of 293 cells using TIGD1 Polyclonal Antibody diluted at 1:500. Secondary antibody was diluted at 1:20000 cells nucleus.



Western blot analysis of the lysates from HeLa cells using TIGD1 antibody.

Storage

-20°C for one year

501 Changsheng S Rd, Nanhu Dist, Jiaxing, Zhejiang, China

Tel: 86 21 31007137 | E-mail: save@bt-laboratory.com | www.bt-laboratory.com