

TIGD3 Polyclonal Antibody

Description

Product type	Primary Antibody
Code	BT-AP09029
Host	Rabbit
Isotype	IgG
Size	20ul, 50ul, 100ul
Immunogen	The antiserum was produced against synthesized peptide derived from human TIGD3. AA range:381-430
Mol wt	52027
Species reactivity	Human
Clonality	Polyclonal
Recommended application	WB, IHC-p, ELISA
Concentration	1 mg/ml
Full name	TIGD3 Antibody
Synonyms	TIGD3; Tigger transposable element-derived protein 3

This product is for research use only, not for use in human, therapeutic or diagnostic procedure.

Background

Tigger transposable element-derived protein 3 encoded by TIGD3 belongs to the tigger subfamily of the pogo superfamily of DNA-mediated transposons in humans. These proteins are related to DNA transposons found in fungi and nematodes, and more distantly to the Tc1 and mariner transposases. They are also very similar to the major mammalian centromere protein B. The exact function of this gene is not known.

Recommended Dilution

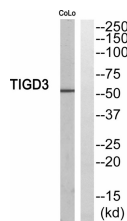
WB: 1: 500 - 1: 2000

IHC: 1: 100 - 1: 300

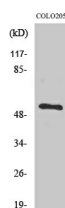
ELISA: 1: 40000

Not yet tested in other applications.

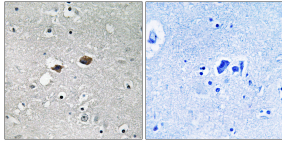
Images



Western blot analysis of TIGD3 Antibody. The lane on the right is blocked with the TIGD3 peptide.



Western Blot analysis of various cells using TIGD3 Polyclonal Antibody. Secondary antibody was diluted at 1:20000 cells nucleus.



Immunohistochemistry analysis of paraffin-embedded human brain, using TIGD3 Antibody. The lane on the right is blocked with the TIGD3 peptide.

Storage

-20°C for one year

501 Changsheng S Rd, Nanhu Dist, Jiaxing, Zhejiang, China

Tel: 86 21 31007137 | E-mail: save@bt-laboratory.com | www.bt-laboratory.com