

F215A Polyclonal Antibody

Description

Product type	Primary Antibody
Code	BT-AP09033
Host	Rabbit
Isotype	IgG
Size	20ul, 50ul, 100ul
Immunogen	Synthesized peptide derived from human protein . at AA range: 30-110
Mol wt	N/A
Species reactivity	Human, Rat, Mouse
Clonality	Polyclonal
Recommended application	WB, ELISA
Concentration	1 mg/ml
Full name	Putative protein FAM215A
Synonyms	Putative protein FAM215A ;Putative apoptosis-related protein 2;APR-2

This product is for research use only, not for use in human, therapeutic or diagnostic procedure.

Background

FAM215A (Family With Sequence Similarity 215 Member A (Non-Protein Coding)) is an RNA Gene, and is affiliated with the non-coding RNA class. It is a Mouse Monoclonal antibody to 6D11 to C17orf88, APR-2, FAM215A, family with sequence similarity 215, member A (non-protein coding), LINC00530. This antibody recognizes Human antigen.

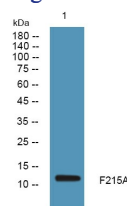
Recommended Dilution

WB: 1: 500 - 1: 2000

ELISA: 1: 5000 - 1: 20000

Not yet tested in other applications.

Images



Western blot analysis of lysates from HCT116 cells, primary antibody was diluted at 1:1000, 4°C overnight

Storage

-20°C for 1 year