

TIMP-3 Polyclonal Antibody

Description

Product type	Primary Antibody
Code	BT-AP09036
Host	Rabbit
Isotype	IgG
Size	20ul, 50ul, 100ul
Immunogen	The antiserum was produced against synthesized peptide derived from human TIMP3. AA range:91-140
Mol wt	24145
Species reactivity	Human, Mouse, Rat
Clonality	Polyclonal
Recommended application	WB, ELISA
Concentration	1 mg/ml
Full name	TIMP-3 Antibody
Synonyms	TIMP3; Metalloproteinase inhibitor 3; Protein MIG-5; Tissue inhibitor of metalloproteinases 3; TIMP-3

This product is for research use only, not for use in human, therapeutic or diagnostic procedure.

Background

TIMP3 belongs to the TIMP gene family. Metalloproteinase inhibitor 3 encoded by this gene family are inhibitors of the matrix metalloproteinases, a group of peptidases involved in degradation of the extracellular matrix (ECM). Expression of this gene is induced in response to mitogenic stimulation and this netrin domain-containing protein is localized to the ECM. Mutations in this gene have been associated with the autosomal dominant disorder Sorsby's fundus dystrophy.

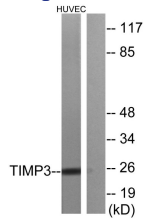
Recommended Dilution

WB: 1: 500 - 1: 2000

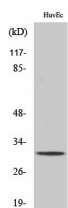
ELISA: 1: 10000

Not yet tested in other applications.

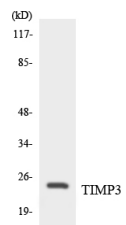
Images



Western blot analysis of lysates from HUVEC cells, using TIMP3 Antibody. The lane on the right is blocked with the synthesized peptide.



Western Blot analysis of various cells using TIMP-3 Polyclonal Antibody diluted at 1:1000. Secondary antibody was diluted at 1:20000



Western blot analysis of the lysates from HepG2 cells using TIMP3 antibody.

Storage

-20°C for one year

501 Changsheng S Rd, Nanhu Dist, Jiaxing, Zhejiang, China

Tel: 86 21 31007137 | E-mail: save@bt-laboratory.com | www.bt-laboratory.com