

TIN2 Polyclonal Antibody

Description

Product type	Primary Antibody
Code	BT-AP09039
Host	Rabbit
Isotype	IgG
Size	20ul, 50ul, 100ul
Immunogen	The antiserum was produced against synthesized peptide derived from human TINF2. AA range:71-120
Mol wt	50023
Species reactivity	Human
Clonality	Polyclonal
Recommended application	WB, IHC-p, ELISA
Concentration	1 mg/ml
Full name	TIN2 Antibody
Synonyms	TINF2; TIN2; TERF1-interacting nuclear factor 2; TRF1-interacting nuclear protein 2

This product is for research use only, not for use in human, therapeutic or diagnostic procedure.

Background

TINF2 encodes one of the proteins of the shelterin, or telosome, complex which protects telomeres by allowing the cell to distinguish between telomeres and regions of DNA damage. The TERF1 interacting nuclear factor 2 encoded by TINF2 is a critical part of shelterin; it interacts with the three DNA-binding proteins of the shelterin complex, and it is important for assembly of the complex. Mutations in this gene cause dyskeratosis congenita (DKC), an inherited bone marrow failure syndrome.

Recommended Dilution

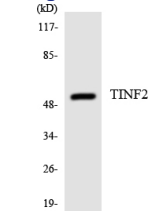
WB: 1: 500 - 1: 2000

IHC: 1: 100 - 1: 300

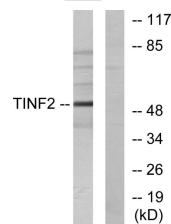
ELISA: 1: 10000

Not yet tested in other applications.

Images



Western blot analysis of the lysates from HeLa cells using TINF2 antibody.



Western blot analysis of lysates from HUVEC cells, using TINF2 Antibody. The lane on the right is blocked with the synthesized peptide.

Storage

-20°C for one year

501 Changsheng S Rd, Nanhu Dist, Jiaxing, Zhejiang, China

Tel: 86 21 31007137 | E-mail: save@bt-laboratory.com | www.bt-laboratory.com