

## TIRAP Polyclonal Antibody

### Description

Product type	Primary Antibody
Code	BT-AP09046
Host	Rabbit
Isotype	IgG
Size	20ul, 50ul, 100ul
Immunogen	The antiserum was produced against synthesized peptide derived from human TIRAP. AA range:52-101
Mol wt	23883
Species reactivity	Human, Mouse
Clonality	Polyclonal
Recommended application	IHC-p, WB, ELISA
Concentration	1 mg/ml
Full name	TIRAP Antibody
Synonyms	TIRAP; MAL; Toll/interleukin-1 receptor domain-containing adaptor protein; TIR domain-containing adaptor protein; Adaptor protein Wyatt; MyD88 adapter-like protein

**This product is for research use only, not for use in human, therapeutic or diagnostic procedure.**

### Background

The innate immune system recognizes microbial pathogens through Toll-like receptors (TLRs), which identify pathogen-associated molecular patterns. Different TLRs recognize different pathogen-associated molecular patterns and all TLRs have a Toll-interleukin 1 receptor (TIR) domain, which is responsible for signal transduction. The TIR domain containing adaptor protein encoded by TIRAP is a TIR adaptor protein involved in the TLR4 signaling pathway of the immune system. It activates NF-kappa-B, MAPK1, MAPK3 and JNK, which then results in cytokine secretion and the inflammatory response. Alternative splicing of this gene results in several transcript variants; however, not all variants have been fully described.

### Recommended Dilution

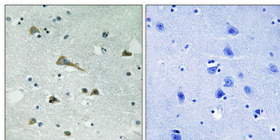
WB: 1: 500 - 2000

ELISA: 1: 20000

IHC: 1: 100 - 1: 300

Not yet tested in other applications.

### Images



Immunohistochemical analysis of paraffin-embedded Human brain. Antibody was diluted at 1:100(4° overnight). High-pressure and temperature Tris-EDTA,pH8.0 was used for antigen retrieval. Negative contrl (right) obtained from antibody was pre-absorbed by immunogen peptide.

### Storage

-20°C for one year