

TLE4 Polyclonal Antibody

Description

Product type	Primary Antibody
Code	BT-AP09053
Host	Rabbit
Isotype	IgG
Size	20ul, 50ul, 100ul
Immunogen	The antiserum was produced against synthesized peptide derived from human TLE4. AA range:161-210
Mol wt	83755
Species reactivity	Human, Mouse, Rat
Clonality	Polyclonal
Recommended application	WB, IHC-p, ELISA
Concentration	1 mg/ml
Full name	TLE4 Antibody
Synonyms	TLE4; KIAA1261; Transducin-like enhancer protein 4

This product is for research use only, not for use in human, therapeutic or diagnostic procedure.

Background

TLE4 (Transducin Like Enhancer Of Split 4) is a Protein Coding gene. Among its related pathways are Signaling by GPCR and Signaling by NOTCH1. Gene Ontology (GO) annotations related to this gene include chromatin binding and transcription factor activity, RNA polymerase II distal enhancer sequence-specific binding. An important paralog of this gene is AES. Transcriptional corepressor that binds to a number of transcription factors. Inhibits the transcriptional activation mediated by PAX5, and by CTNNB1 and TCF family members in Wnt signaling. The effects of full-length TLE family members may be modulated by association with dominant-negative AES. Essential for the transcriptional repressor activity of SIX3 during retina and lens development and for SIX3 transcriptional auto-repression (By similarity).

Recommended Dilution

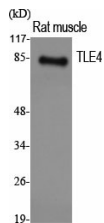
WB: 1: 500 - 1: 2000

IHC: 1: 100 - 1: 300

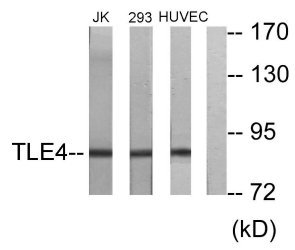
ELISA: 1: 20000

Not yet tested in other applications.

Images



Western Blot analysis of various cells using TLE4 Polyclonal Antibody. Secondary antibody was diluted at 1:20000 cells nucleus.



Storage

-20°C for one year

501 Changsheng S Rd, Nanhu Dist, Jiaxing, Zhejiang, China

Tel: 86 21 31007137 | E-mail: save@bt-laboratory.com | www.bt-laboratory.com