

NF2(Phospho Ser518) Polyclonal Antibody

Description

Product type	Primary Antibody
Code	BT-AP09071
Host	Rabbit
Isotype	IgG
Size	20ul, 50ul, 100ul
Immunogen	The antiserum was produced against synthesized peptide derived from human Merlin around the phosphorylation site of Ser518. AA range:485-534
Mol wt	69690
Species reactivity	Human, Mouse, Rat
Clonality	Polyclonal
Recommended application	WB, IHC-p, IF, ICC, ELISA
Concentration	1 mg/ml
Full name	Merlin
Synonyms	Merlin; NF2; SCH; Merlin; Moesin-ezrin-radixin-like protein; Neurofibromin-2; Schwannomerlin; Schwannomin

This product is for research use only, not for use in human, therapeutic or diagnostic procedure.

Background

This gene encodes a protein that is similar to some members of the ERM (ezrin| radixin| moesin) family of proteins that are thought to link cytoskeletal components with proteins in the cell membrane. This gene product has been shown to interact with cell-surface proteins| proteins involved in cytoskeletal dynamics and proteins involved in regulating ion transport. This gene is expressed at high levels during embryonic development; in adults| significant expression is found in Schwann cells| meningeal cells| lens and nerve. Mutations in this gene are associated with neurofibromatosis type II which is characterized by nervous system and skin tumors and ocular abnormalities. Two predominant isoforms and a number of minor isoforms are produced by alternatively spliced transcripts.

Recommended Dilution

WB: 1: 500 - 1: 2000

IHC-p: 1: 100 - 1: 300

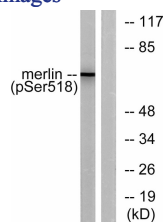
IF: 1: 200 - 1: 1000

ICC: 1: 200 - 1: 1000

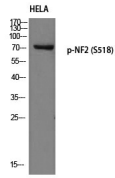
ELISA: 1: 5000

Not yet tested in other applications.

Images



Western blot analysis of HELA using p-NF2 (S518) antibody. Antibody was diluted at 1:1000



Western blot analysis of lysates from HUVEC cells treated with IFN-alpha 1000U/ml 18h, using Merlin (Phospho-Ser518) Antibody. The lane on the right is blocked with the phospho peptide.

Storage

-20°C for 1 year

501 Changsheng S Rd, Nanhu Dist, Jiaxing, Zhejiang, China

Tel: 86 21 31007137 | E-mail: save@bt-laboratory.com | www.bt-laboratory.com