

TM4SF1 Polyclonal Antibody

Description

Product type	Primary Antibody
Code	BT-AP09073
Host	Rabbit
Isotype	IgG
Size	20ul, 50ul, 100ul
Immunogen	The antiserum was produced against synthesized peptide derived from human T4S1. AA range:1-50
Mol wt	21632
Species reactivity	Human, Mouse
Clonality	Polyclonal
Recommended application	IHC-p, ELISA
Concentration	1 mg/ml
Full name	TM4SF1 Antibody
Synonyms	TM4SF1; M3S1; TAAL6; Transmembrane 4 L6 family member 1; Membrane component chromosome 3 surface marker 1; Tumor-associated antigen L6

This product is for research use only, not for use in human, therapeutic or diagnostic procedure.

Background

The protein encoded by TM4SF1 is a member of the transmembrane 4 superfamily, also known as the tetraspanin family. Most of these members are cell-surface proteins that are characterized by the presence of four hydrophobic domains. The proteins mediate signal transduction events that play a role in the regulation of cell development, activation, growth and motility. This encoded protein is a cell surface antigen and is highly expressed in different carcinomas.

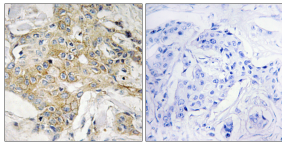
Recommended Dilution

IHC: 1: 100 - 1: 300

ELISA: 1: 20000

Not yet tested in other applications.

Images



Immunohistochemistry analysis of paraffin-embedded human breast carcinoma tissue, using T4S1 Antibody. The picture on the right is blocked with the synthesized peptide.

Storage

-20°C for one year