

## TMEM101 Polyclonal Antibody

### Description

|                                |   |
|--------------------------------|---|
| <b>Product type</b>            | Primary Antibody  |
| <b>Code</b>                    | BT-AP09079  |
| <b>Host</b>                    | Rabbit  |
| <b>Isotype</b>                 | IgG   |
| <b>Size</b>                    | 20ul, 50ul, 100ul   |
| <b>Immunogen</b>               | The antiserum was produced against synthesized peptide derived from human TMEM101. AA range:101-150 |
| <b>Mol wt</b>                  | 28795   |
| <b>Species reactivity</b>      | Human, Mouse  |
| <b>Clonality</b>               | Polyclonal  |
| <b>Recommended application</b> | WB, ELISA   |
| <b>Concentration</b>           | 1 mg/ml   |
| <b>Full name</b>               | TMEM101 Antibody  |
| <b>Synonyms</b>                | TMEM101; Transmembrane protein 101; Putative NF-kappa-B-activating protein 130                      |

This product is for research use only, not for use in human, therapeutic or diagnostic procedure.

### Background

TMEM101 (Transmembrane Protein 101) is a Protein Coding gene. GO annotations related to this gene include signal transducer activity.

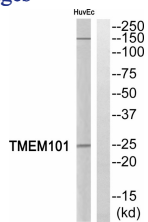
### Recommended Dilution

WB: 1: 500 - 1: 2000

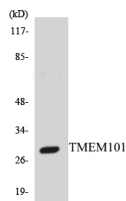
ELISA: 1: 10000

Not yet tested in other applications.

### Images



Western blot analysis of TMEM101 Antibody. The lane on the right is blocked with the TMEM101 peptide.



Western blot analysis of the lysates from HepG2 cells using TMEM101 antibody.

### Storage

-20°C for one year