

## TMEM16A Polyclonal Antibody

### Description

<b>Product type</b>	Primary Antibody
<b>Code</b>	BT-AP09081
<b>Host</b>	Rabbit
<b>Isotype</b>	IgG
<b>Size</b>	20ul, 50ul, 100ul
<b>Immunogen</b>	The antiserum was produced against synthesized peptide derived from human TM16A. AA range:921-970
<b>Mol wt</b>	114078
<b>Species reactivity</b>	Human
<b>Clonality</b>	Polyclonal
<b>Recommended application</b>	IF, ELISA
<b>Concentration</b>	1 mg/ml
<b>Full name</b>	TMEM16A Antibody
<b>Synonyms</b>	ANO1; DOG1; ORAOV2; TAOS2; TMEM16A; Anoctamin-1; Discovered on gastrointestinal stromal tumors protein 1; Oral cancer overexpressed protein 2; Transmembrane protein 16A; Tumor-amplified and overexpres

**This product is for research use only, not for use in human, therapeutic or diagnostic procedure.**

### Background

ANO1 (Anoctamin 1) is a Protein Coding gene. Diseases associated with ANO1 include frontal sinus squamous cell carcinoma and liver leiomyoma. Among its related pathways are Neuroscience and Ion channel transport. GO annotations related to this gene include protein homodimerization activity and intracellular calcium activated chloride channel activity. An important paralog of this gene is ANO5.

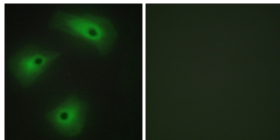
### Recommended Dilution

IF: 1: 200 - 1: 1000

ELISA: 1: 20000

Not yet tested in other applications.

### Images



Immunofluorescence analysis of HeLa cells, using TM16A Antibody. The picture on the right is blocked with the synthesized peptide.

### Storage

-20°C for one year