

DDX11 Rabbit Polyclonal Antibody

Description

Product type	Primary Antibody
Code	BT-AP09096
Host	Rabbit
Isotype	IgG
Size	20ul, 50ul, 100ul
Immunogen	Synthesized peptide derived from human DDX11
Mol wt	N/A
Species reactivity	Human, Mouse
Clonality	Polyclonal
Recommended application	WB
Concentration	1 mg/ml
Full name	DDX11
Synonyms	DDX11; Probable ATP-dependent RNA helicase DDX11; EC 3.6.4.13; CHL1-related protein 1; hCHLR1; DEAD/H box protein 11; Keratinocyte growth factor-regulated gene 2 protein; KRG-2)

This product is for research use only, not for use in human, therapeutic or diagnostic procedure.

Background

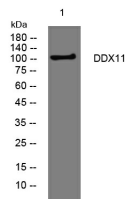
DEAD box proteins| characterized by the conserved motif Asp-Glu-Ala-Asp (DEAD)| are putative RNA helicases. They are implicated in a number of cellular processes involving alteration of RNA secondary structure such as translation initiation| nuclear and mitochondrial splicing| and ribosome and spliceosome assembly. Based on their distribution patterns| some members of this family are believed to be involved in embryogenesis| spermatogenesis| and cellular growth and division. This gene encodes a DEAD box protein| which is an enzyme that possesses both ATPase and DNA helicase activities. This gene is a homolog of the yeast CHL1 gene| and may function to maintain chromosome transmission fidelity and genome stability. Alternative splicing results in multiple transcript variants encoding distinct isoforms.

Recommended Dilution

WB: 1: 500 - 1: 2000

Not yet tested in other applications.

Images



Western blot analysis of lysates from HpeG2 cells, primary antibody was diluted at 1:1000, 4°C overnight

Storage

-20°C for 1 year