

TNF-R1 Polyclonal Antibody

Description

Product type	Primary Antibody
Code	BT-AP09100
Host	Rabbit
Isotype	IgG
Size	20ul, 50ul, 100ul
Immunogen	The antiserum was produced against synthesized peptide derived from human TNF Receptor I. AA range:381-430
Mol wt	50495
Species reactivity	Human, Mouse, Rat
Clonality	Polyclonal
Recommended application	IHC-p, WB, ELISA
Concentration	1 mg/ml
Full name	TNF-R1 Antibody
Synonyms	TNFRSF1A; TNFAR; TNFR1; Tumor necrosis factor receptor superfamily member 1A; Tumor necrosis factor receptor 1; TNF-R1; Tumor necrosis factor receptor type I; TNF-R1; TNFR-I; p55; p60; CD antigen CD12

This product is for research use only, not for use in human, therapeutic or diagnostic procedure.

Background

The protein encoded by TNFRSF1A (TNF receptor superfamily member 1A) is a member of the TNF-receptor superfamily. This protein is one of the major receptors for the tumor necrosis factor- α . This receptor can activate NF- κ B, mediate apoptosis, and function as a regulator of inflammation. Antiapoptotic protein BCL2-associated athanogene 4 (BAG4/SODD) and adaptor proteins TRADD and TRAF2 have been shown to interact with this receptor, and thus play regulatory roles in the signal transduction mediated by the receptor. Germline mutations of the extracellular domains of this receptor were found to be associated with the autosomal dominant periodic fever syndrome. The impaired receptor clearance is thought to be a mechanism of the disease.

Recommended Dilution

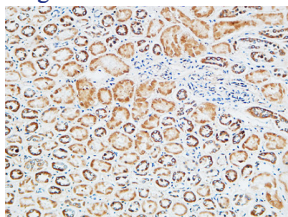
WB: 1: 500 - 2000

ELISA: 1: 20000

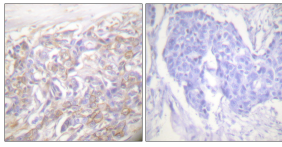
IHC: 1: 100 - 1: 300

Not yet tested in other applications.

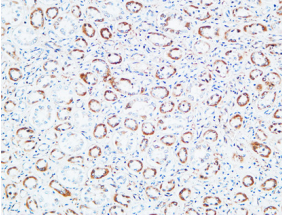
Images



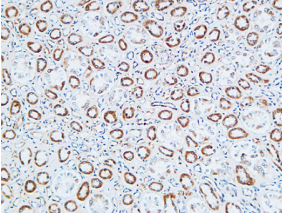
Immunohistochemical analysis of paraffin-embedded Human kidney. 1, Antibody was diluted at 1:200(4° overnight). 2, High-pressure and temperature EDTA, pH8.0 was used for antigen retrieval. 3,Secondary antibody was diluted at 1:200(room temperature, 30min).



Immunohistochemistry analysis of paraffin-embedded human breast carcinoma tissue, using TNF Receptor I Antibody. The picture on the right is blocked with the synthesized peptide.



Immunohistochemical analysis of paraffin-embedded Human kidney. 1, Antibody was diluted at 1:200(4° overnight). 2, High-pressure and temperature EDTA, pH8.0 was used for antigen retrieval. 3,Secondary antibody was diluted at 1:200(room temperature, 30min).



Immunohistochemical analysis of paraffin-embedded Human kidney. 1, Antibody was diluted at 1:200(4° overnight). 2, High-pressure and temperature EDTA, pH8.0 was used for antigen retrieval. 3,Secondary antibody was diluted at 1:200(room temperature, 30min).

Storage

-20°C for one year

501 Changsheng S Rd, Nanhu Dist, Jiaxing, Zhejiang, China

Tel: 86 21 31007137 | E-mail: save@bt-laboratory.com | www.bt-laboratory.com