

FCRLB Polyclonal Antibody

Description

Product type	Primary Antibody
Code	BT-AP09106
Host	Rabbit
Isotype	IgG
Size	20ul, 50ul, 100ul
Immunogen	Synthesized peptide derived from human protein . at AA range: 340-420
Mol wt	N/A
Species reactivity	Human, Mouse
Clonality	Polyclonal
Recommended application	WB, ELISA
Concentration	1 mg/ml
Full name	Fc receptor-like B
Synonyms	Fc receptor-like B ;Fc receptor homolog expressed in B-cells protein 2;FREB-2;Fc receptor-like and mucin-like protein 2;Fc receptor-like protein 2;Fc receptor-related protein Y;FcRY

This product is for research use only, not for use in human, therapeutic or diagnostic procedure.

Background

FCRL2 belongs to the Fc receptor family. Fc receptors are involved in phagocytosis, antibody-dependent cell cytotoxicity, immediate hypersensitivity, and transcytosis of immunoglobulins via their ability to bind immunoglobulin (Ig) constant regions (Chikae et al., 2005)

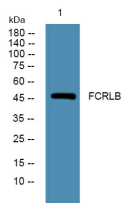
Recommended Dilution

WB: 1: 500 - 1: 2000

ELISA: 1: 5000 - 1: 20000

Not yet tested in other applications.

Images



Western blot analysis of lysates from DU145 cells, primary antibody was diluted at 1:1000, 4°C overnight

Storage

-20°C for 1 year