

NFE2 Polyclonal Antibody

Description

Product type	Primary Antibody
Code	BT-AP09118
Host	Rabbit
Isotype	IgG
Size	20ul, 50ul, 100ul
Immunogen	Synthesized peptide derived from part region of human protein
Mol wt	N/A
Species reactivity	Human, Mouse, Rat
Clonality	Polyclonal
Recommended application	WB, ELISA
Concentration	1 mg/ml
Full name	Transcription factor NF-E2 45 kDa subunit
Synonyms	Transcription factor NF-E2 45 kDa subunit (Leucine zipper protein NF-E2;Nuclear factor; erythroid-derived 2 45 kDa subunit;p45 NF-E2)

This product is for research use only, not for use in human, therapeutic or diagnostic procedure.

Background

Required for activity at the locus control region (LCR) upstream of the globin gene complexes. Requires p18 NF-E2 for binding to the NF-E2 motif. May play a role in all aspects of hemoglobin production: globin synthesis| heme synthesis| and the procurement of iron.|Belongs to the bZIP family.|Belongs to the bZIP family. CNC subfamily.|Contains 1 bZIP domain.|subunit:Interacts with MLL2; leading to activate transcription of the beta-globin locus (By similarity). Heterodimer of p45 NF-E2 and p18 NF-E2. Forms high affinity heterodimer with MAFG; the interaction promotes erythropoiesis.|tissue specificity:Expressed in hematopoietic cells and also in colon and testis.|

Recommended Dilution

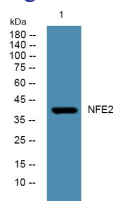
WB: 1: 500 - 1: 2000

ELISA: 1: 5000 - 1: 20000

ELISA: 1: 20000

Not yet tested in other applications.

Images



Western blot analysis of lysates from U2OS cells, primary antibody was diluted at 1:1000, 4°C overnight

Storage

-20°C for 1 year