

## TOB1 Polyclonal Antibody

### Description

<b>Product type</b>	Primary Antibody
<b>Code</b>	BT-AP09121
<b>Host</b>	Rabbit
<b>Isotype</b>	IgG
<b>Size</b>	20ul, 50ul, 100ul
<b>Immunogen</b>	The antiserum was produced against synthesized peptide derived from human TOB1. AA range:130-179
<b>Mol wt</b>	38155
<b>Species reactivity</b>	Human, Mouse, Rat
<b>Clonality</b>	Polyclonal
<b>Recommended application</b>	WB, IHC-p, ELISA
<b>Concentration</b>	1 mg/ml
<b>Full name</b>	TOB1 Antibody
<b>Synonyms</b>	TOB1; TOB; TROB1; Protein Tob1; Transducer of erbB-2 1

**This product is for research use only, not for use in human, therapeutic or diagnostic procedure.**

### Background

TOB1 encodes a member of the transducer of erbB-2 /B-cell translocation gene protein family. Members of this family are anti-proliferative factors that have the potential to regulate cell growth. The transducer of ERBB2, 2 may function as a tumor suppressor. Alternate splicing results in multiple transcript variants.

### Recommended Dilution

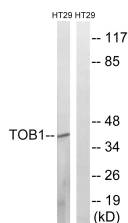
WB: 1: 500 - 1: 2000

IHC: 1: 100 - 1: 300

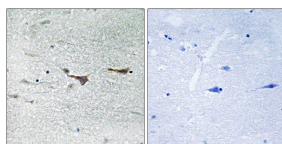
ELISA: 1: 10000

Not yet tested in other applications.

### Images



Western blot analysis of lysates from HT-29 cells, treated with serum 20% 15', using TOB1 Antibody. The lane on the right is blocked with the synthesized peptide.



Immunohistochemistry analysis of paraffin-embedded human brain tissue, using TOB1 Antibody. The picture on the right is blocked with the synthesized peptide.

### Storage

-20°C for one year