

TOK-1 Polyclonal Antibody

Description

Product type	Primary Antibody
Code	BT-AP09122
Host	Rabbit
Isotype	IgG
Size	20ul, 50ul, 100ul
Immunogen	Synthesized peptide derived from TOK-1 . at AA range: 60-140
Mol wt	35979
Species reactivity	Human
Clonality	Polyclonal
Recommended application	WB, ELISA
Concentration	1 mg/ml
Full name	TOK-1 Antibody
Synonyms	BCCIP; TOK1; BRCA2 and CDKN1A-interacting protein; P21- and CDK-associated protein 1; Protein TOK-1

This product is for research use only, not for use in human, therapeutic or diagnostic procedure.

Background

BCCIP (BRCA2 and CDKN1A interacting protein) product was isolated on the basis of its interaction with BRCA2 and p21 proteins. It is an evolutionarily conserved nuclear protein with multiple interacting domains. The N-terminal half shares moderate homology with regions of calmodulin and M-calpain, suggesting that it may also bind calcium. Functional studies indicate that this protein may be an important cofactor for BRCA2 in tumor suppression, and a modulator of CDK2 kinase activity via p21. This protein has also been implicated in the regulation of BRCA2 and RAD51 nuclear focus formation, double-strand break-induced homologous recombination, and cell cycle progression. Multiple transcript variants encoding different isoforms have been described for BCCIP.

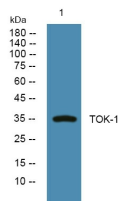
Recommended Dilution

WB: 1: 500 - 1: 2000

ELISA: 1: 5000

Not yet tested in other applications.

Images



Western blot analysis of lysates from KB cells, primary antibody was diluted at 1:1000, 4°over night

Storage

-20°C for one year